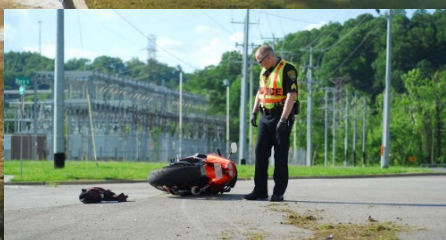




**BLOWING GRASS INTO  
THE STREET CAN  
LEAD TO:**



**Cyclist injuries & death**



**Toxic algae blooms**



**Localized Flooding**





**MIDWEST CITY**  
*Where the Spirit Flies High*

**Buffalo Grass**

# Lawn Mowing Tips & Tricks

**1. Set Mower Blades to 3":** This height inhibits weed growth and reduces watering requirements, saving you time and money!

**2. Plan Your Border Cuts:** Mow around sidewalks, streets, and ditches in a way that prevents grass from accumulating in them. Grass clippings can clog storm drains or flow to our nearest water body, causing flooding and harmful algae blooms!

**3. Mulch In-Place:** leave grass clippings "mulched" on the lawn to give back up to 25% of your lawn fertilizer needs!

Questions or concerns please contact  
the stormwater quality department at  
(405) 739-1040

