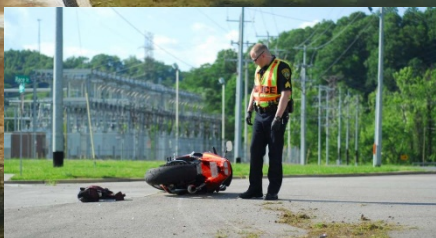




**BLOWING GRASS INTO
THE STREET CAN
LEAD TO:**



Cyclist injuries & death



Toxic algae blooms



Localized Flooding





MIDWEST CITY

Where the Spirit Flies High

Bermuda

Lawn Mowing Tips & Tricks

1. Set Mower Blades to 2” or less: Bermuda grass stays green longer if it’s cut shorter. Never cut more than 1/3 of the length at once, as this may stress the lawn.

2. Plan Your Border Cuts: Mow around sidewalks, streets, and ditches in a way that prevents grass from accumulating in them. Grass clippings can clog storm drains or flow to our nearest water body, causing flooding and harmful algae blooms!

3. Mulch In-Place: leave grass clippings “mulched” on the lawn to give back up to 25% of your lawn fertilizer needs!

Questions or concerns please contact
the stormwater quality department at
(405) 739-1040

