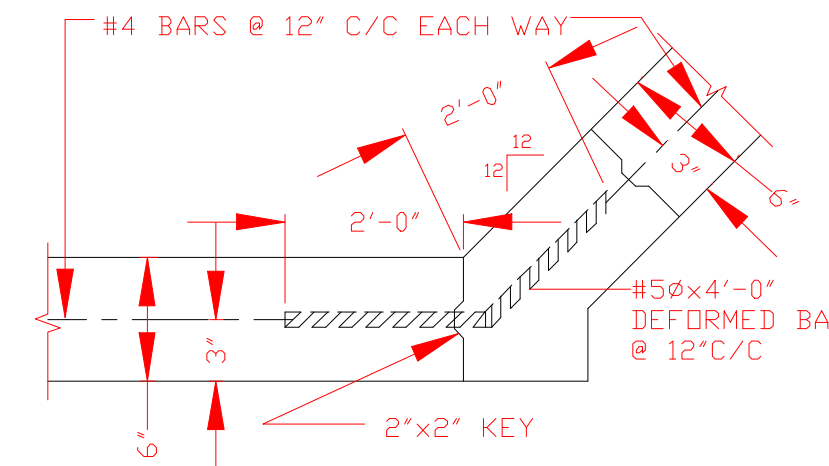


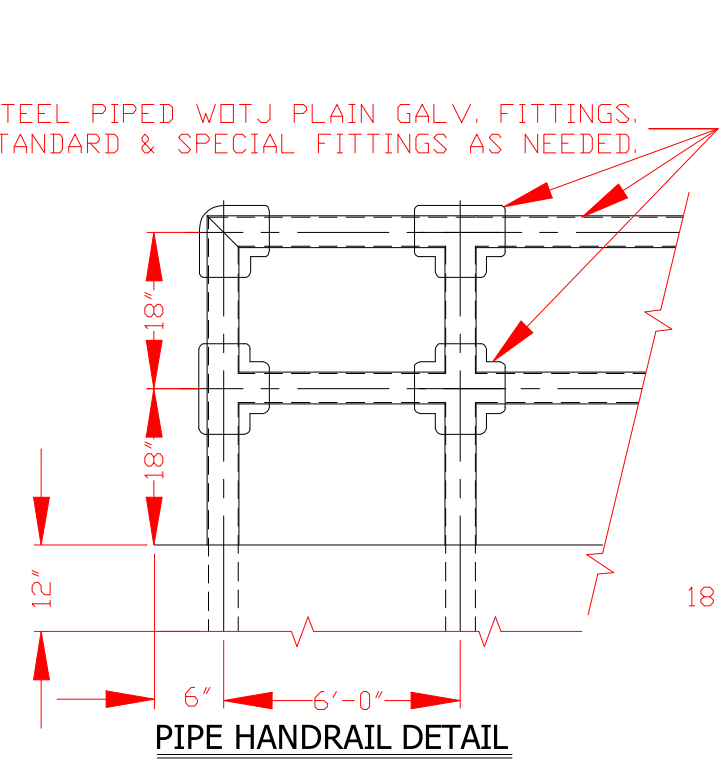
LONGITUDINAL CONSTRUCTION JOINT
FOR 6" BOTTOM & 4" SIDE WALLS
4" WALLS FOR DEPTH OF 0' TO 5"
WALL DETAIL "A"

CONCRETE CHANNEL LINER JOINT DETAIL



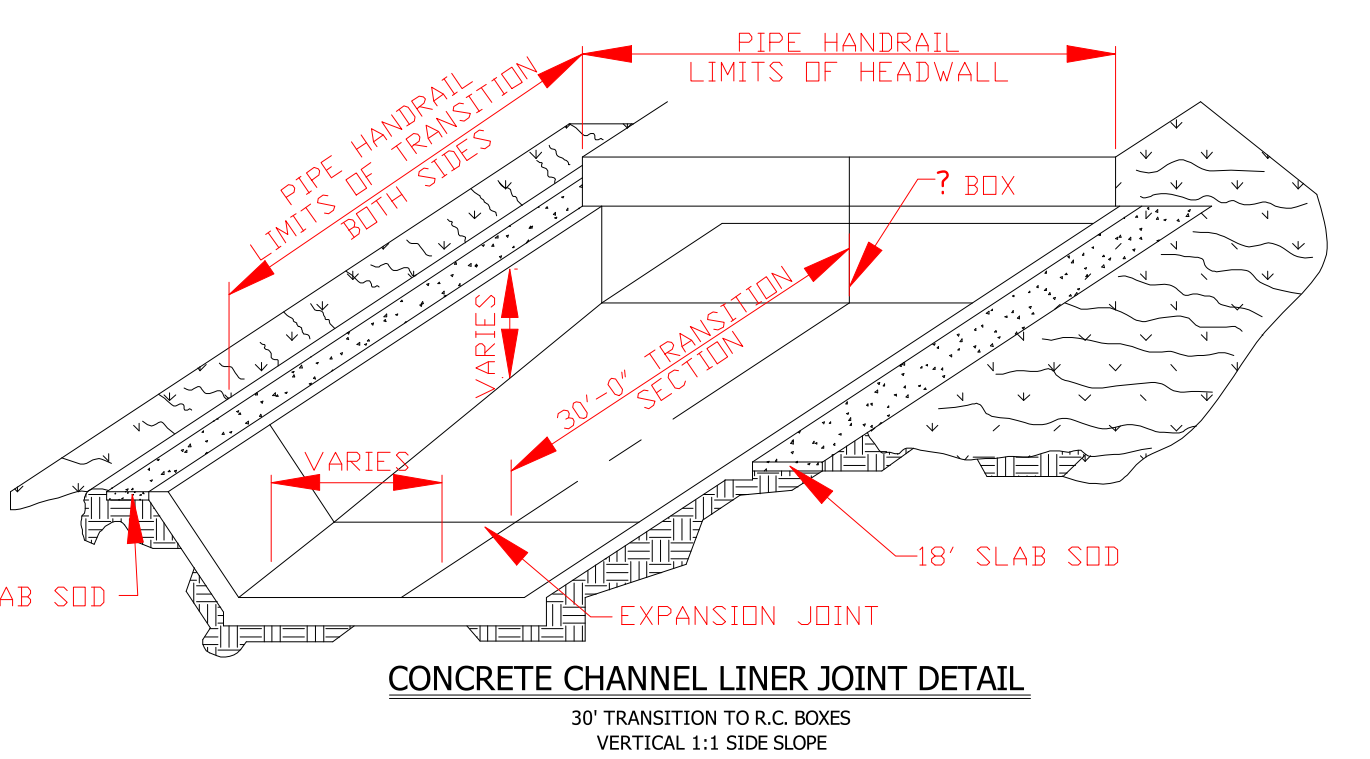
LONGITUDINAL CONSTRUCTION JOINT
FOR 6" BOTTOM & 4" SIDE WALLS
6" WALLS FOR DEPTH OF 0' TO 5"
WALL DETAIL "B"

CONCRETE CHANNEL LINER JOINT DETAIL

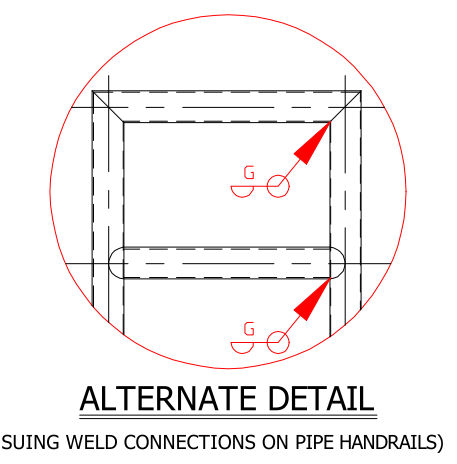


PIPE HANDRAIL DETAIL

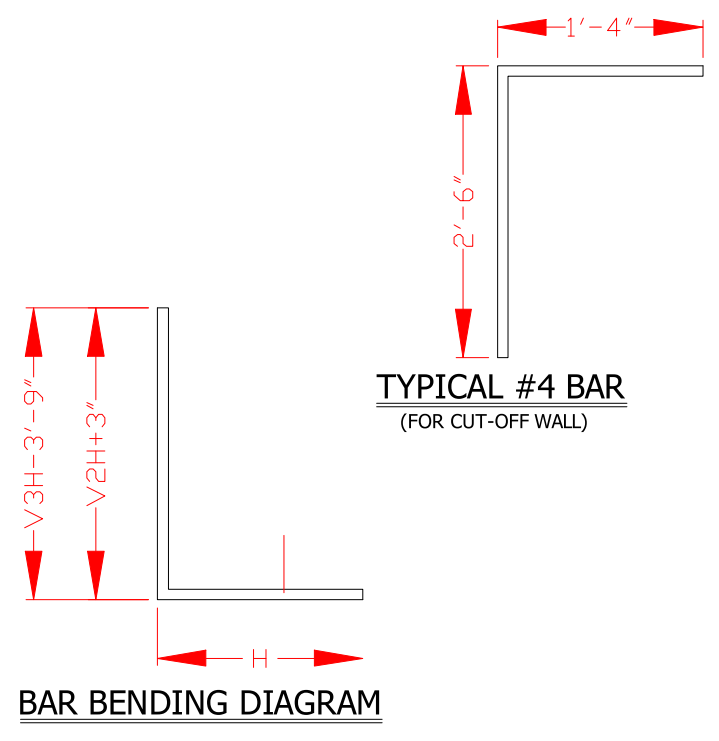
HANDRAIL NOTES: WELD CONNECTIONS MAY BE USED FOR PIPE HANDRAIL. WELD CONNECTIONS SHALL BE THOROUGHLY CLEANED OF ALL LOOSE SCALED GROUND SMOOTH & SPOT POINTED WITH TWO COATS OF ALUMINUM PAINT.



CONCRETE CHANNEL LINER JOINT DETAIL
30° TRANSITION TO R.C. BOXES
VERTICAL 1:1 SIDE SLOPE

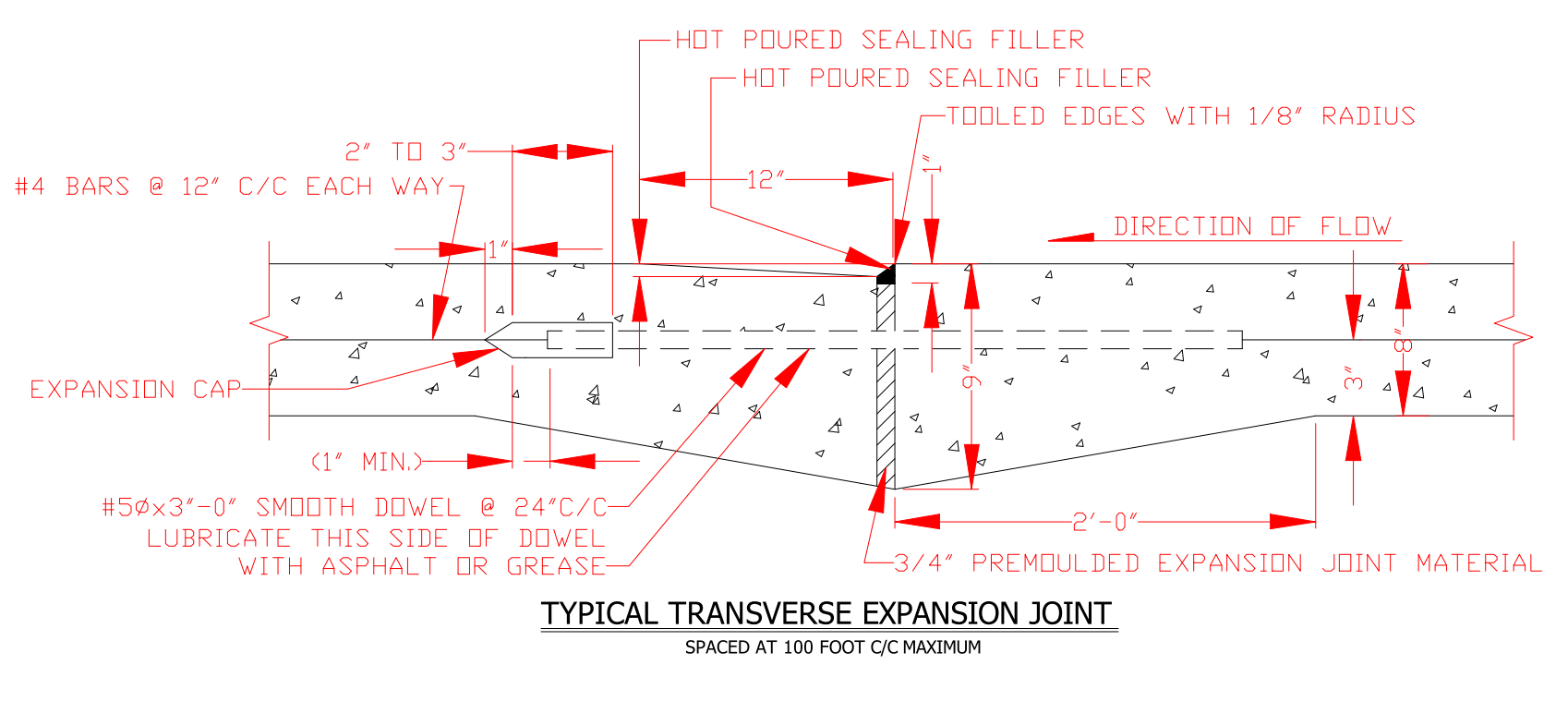


ALTERNATE DETAIL
(USING WELD CONNECTIONS ON PIPE HANDRAILS)

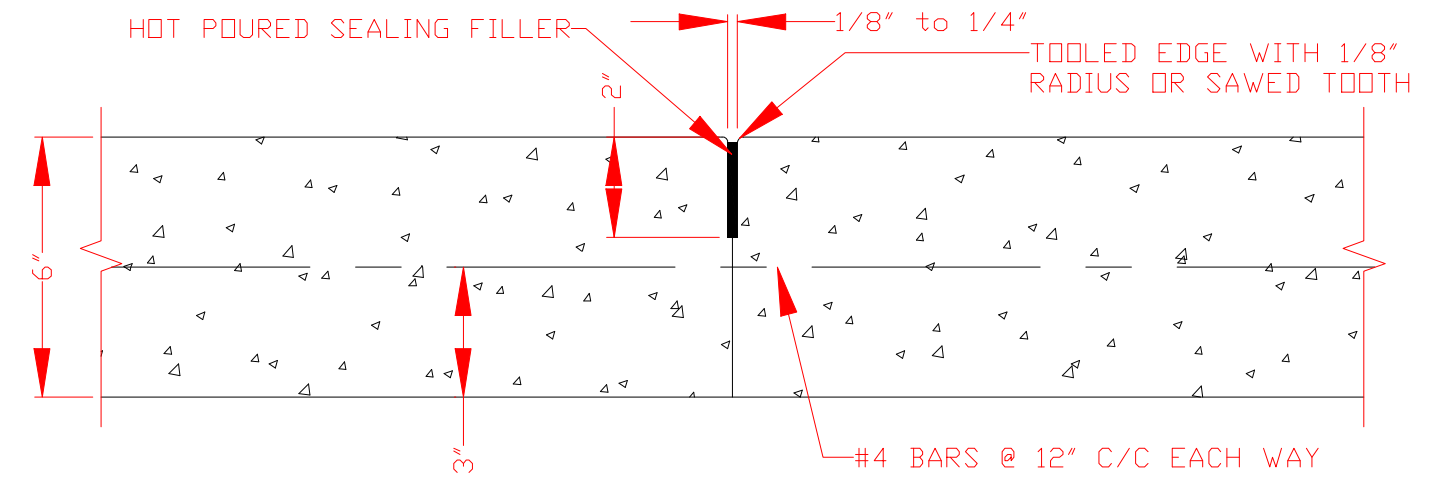


TYPICAL #4 BAR
(FOR CUT-OFF WALL)

BAR BENDING DIAGRAM

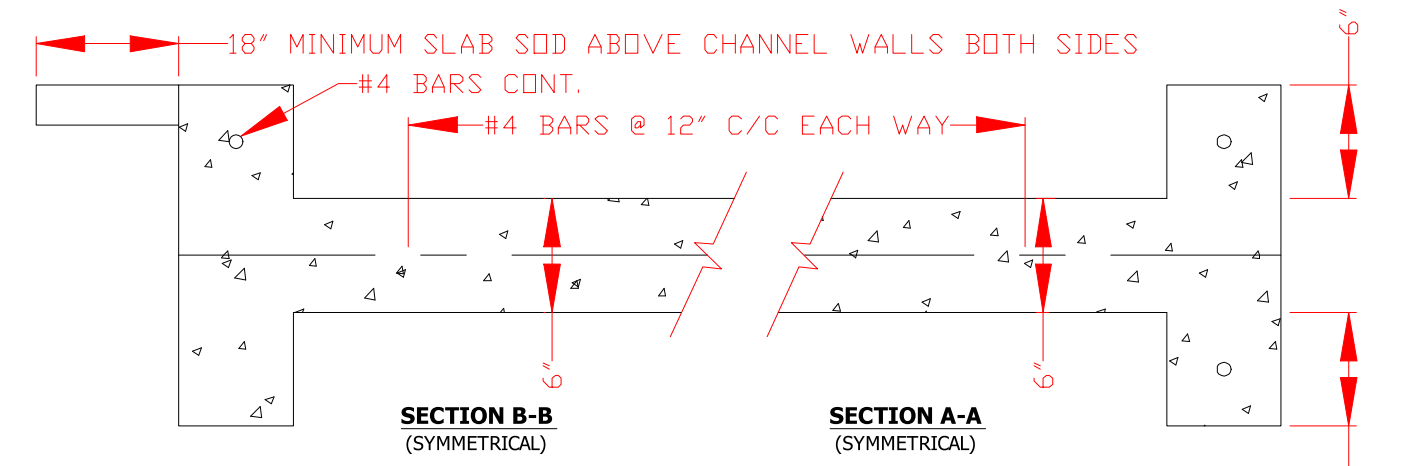


TYPICAL TRANSVERSE EXPANSION JOINT
SPACED AT 100 FOOT C/C MAXIMUM



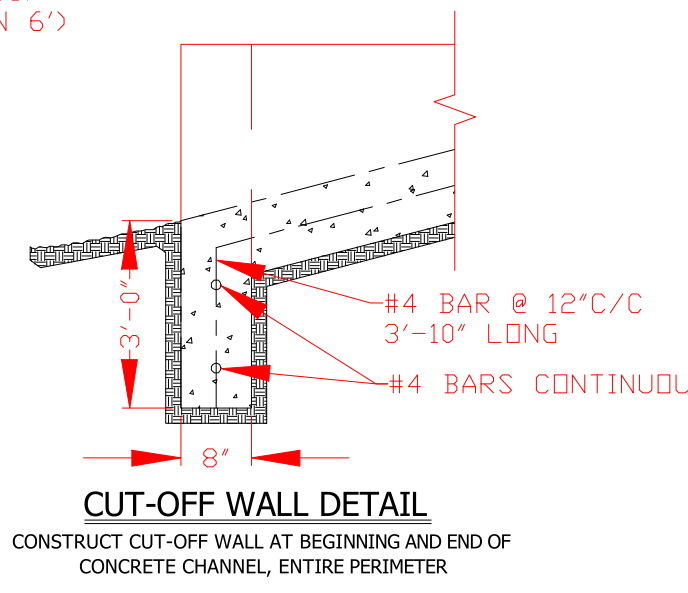
CONTRACTION JOINT
SPACED AT 20' C/C

(ALSO USE JOINT LONGITUDINALLY AT C/OF CHANNEL FOR BOTTOM WIDTHS OF 12' AND OVER)

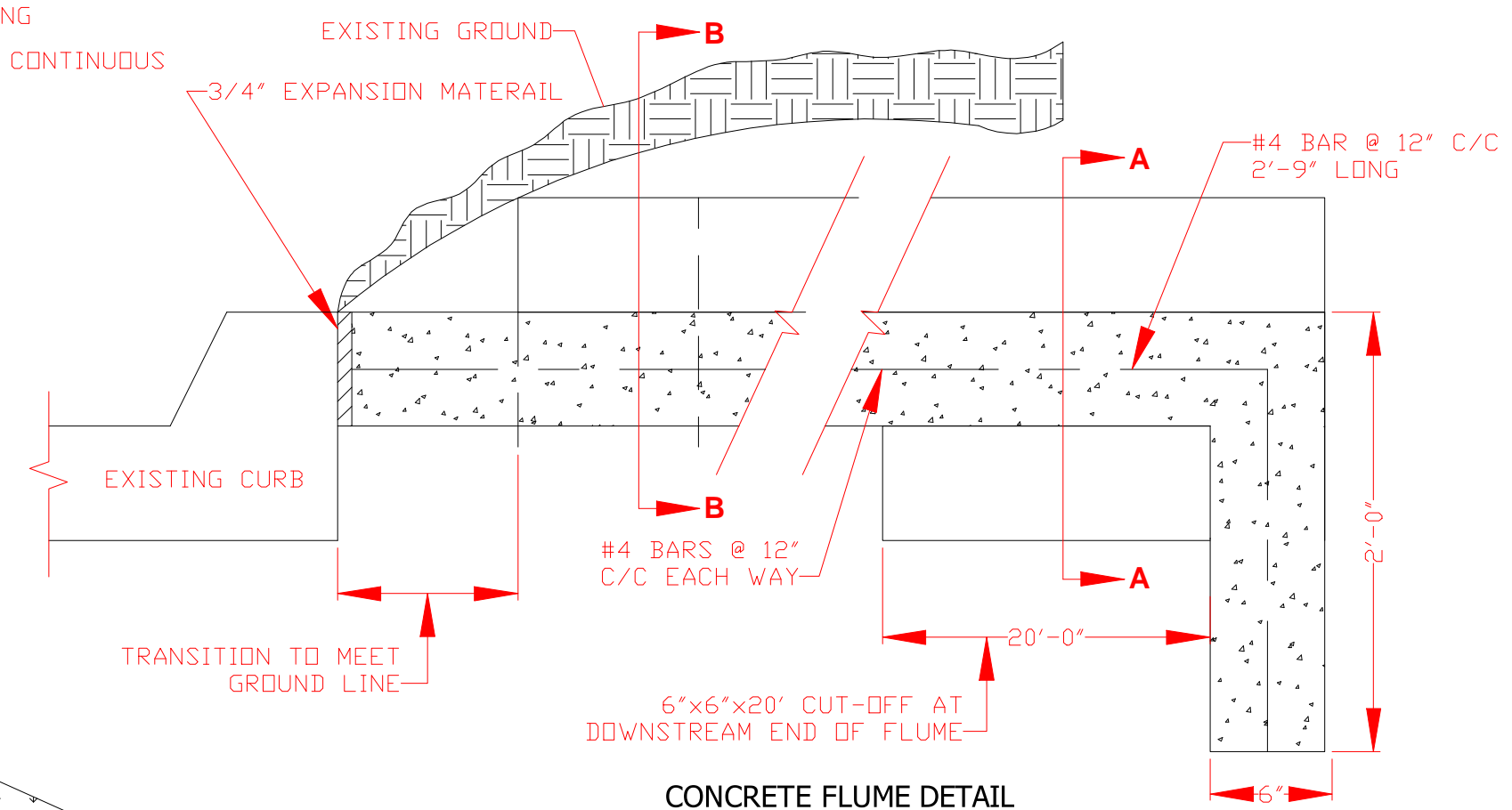


CONSTRUCTION JOINT
SPACED AT 20' C/C

(ALSO USE JOINT LONGITUDINALLY AT C/OF CHANNEL FOR BOTTOM WIDTHS OF 12' AND OVER)

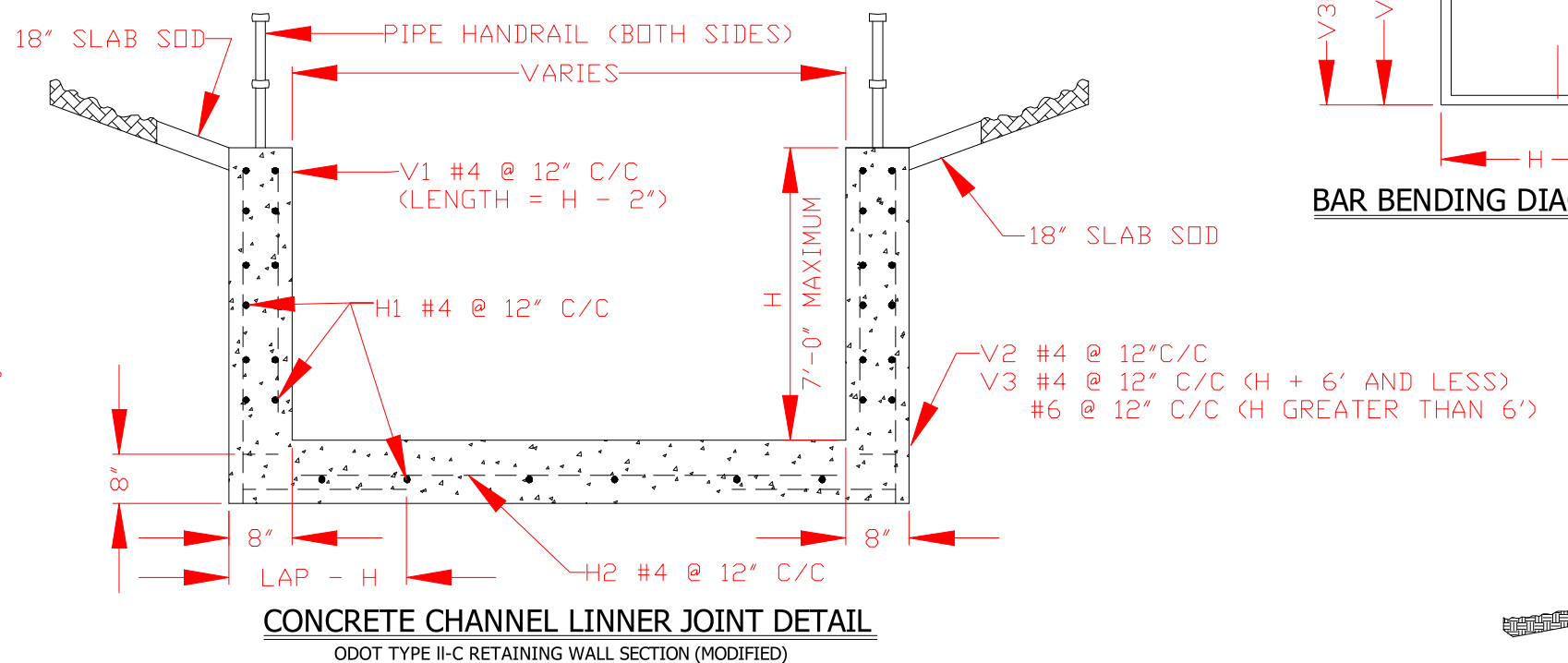


CUT-OFF WALL DETAIL
CONSTRUCT CUT-OFF WALL AT BEGINNING AND END OF CONCRETE CHANNEL, ENTIRE PERIMETER

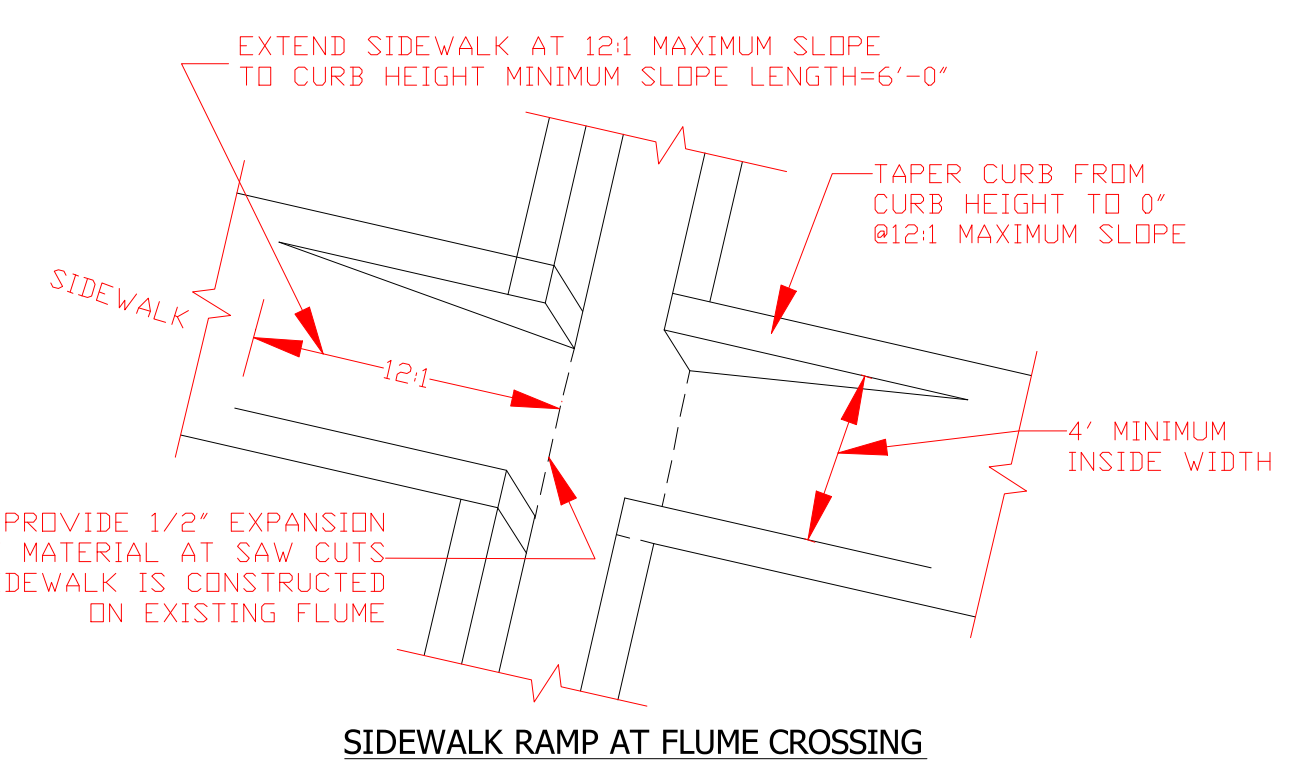


CONCRETE FLUME DETAIL

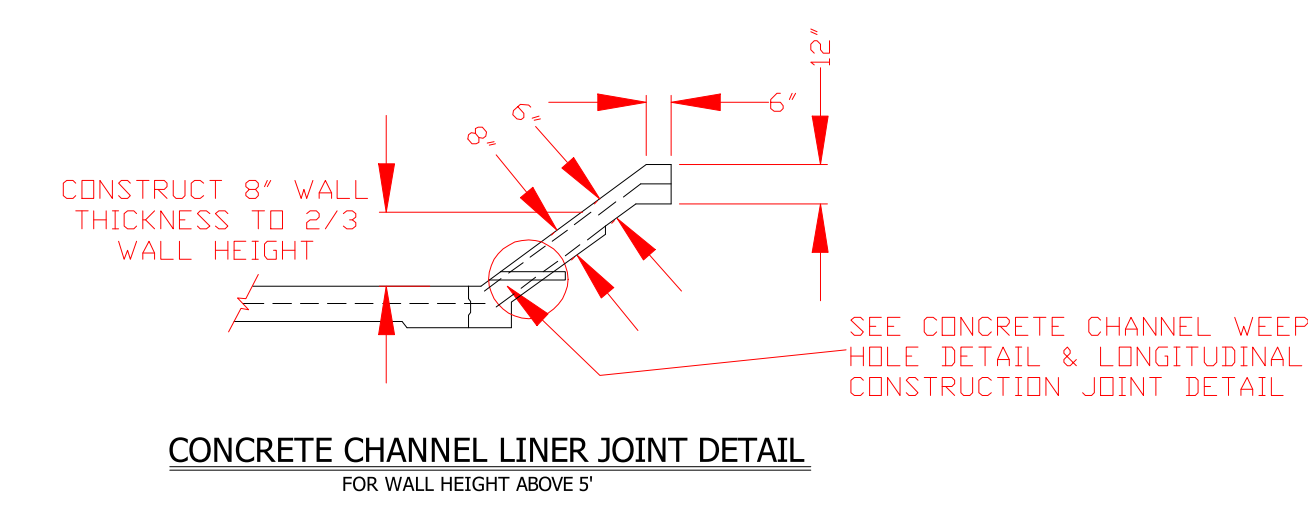
NOTE: 3/4" EXPANSION JOINT @ 100' MAXIMUM
SAWED CONSTRUCTION JOINT @ 20' MAXIMUM



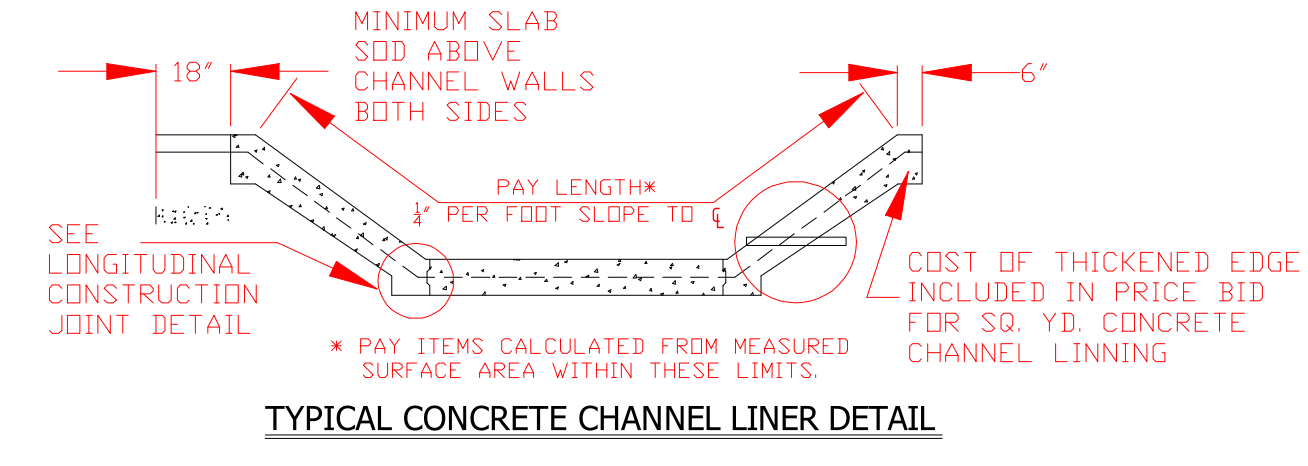
CONCRETE CHANNEL LINER JOINT DETAIL
ODOT TYPE II-C RETAINING WALL SECTION (MODIFIED)



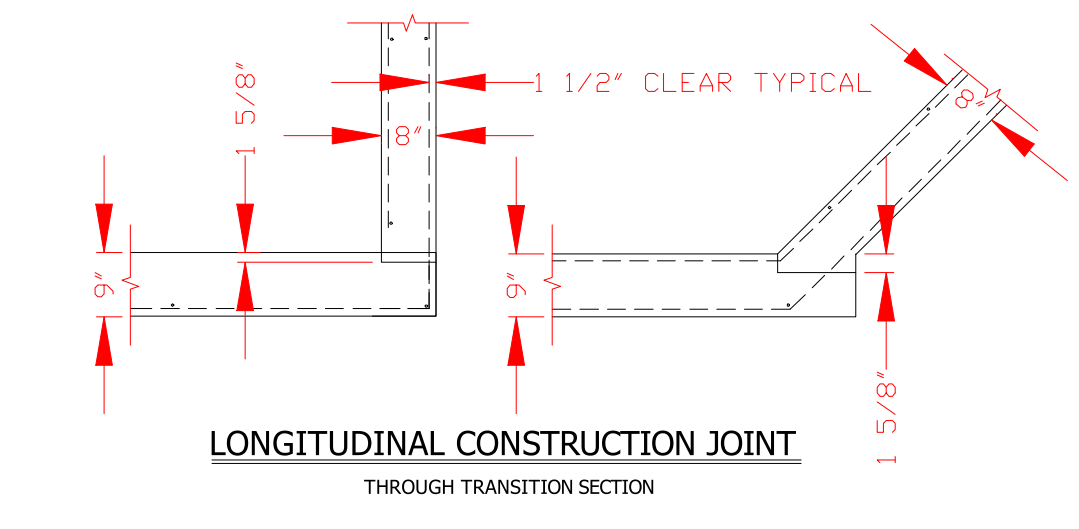
SIDEWALK RAMP AT FLUME CROSSING



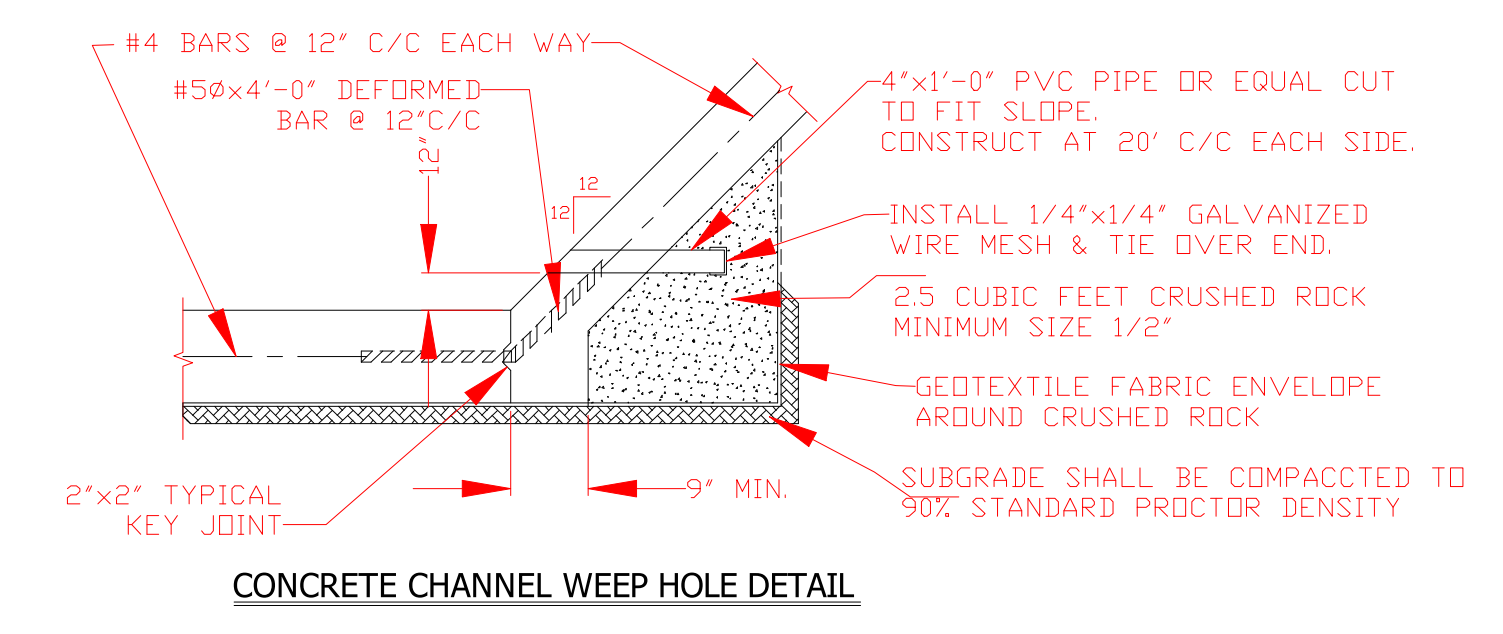
CONCRETE CHANNEL LINER JOINT DETAIL
FOR WALL HEIGHT ABOVE 5'



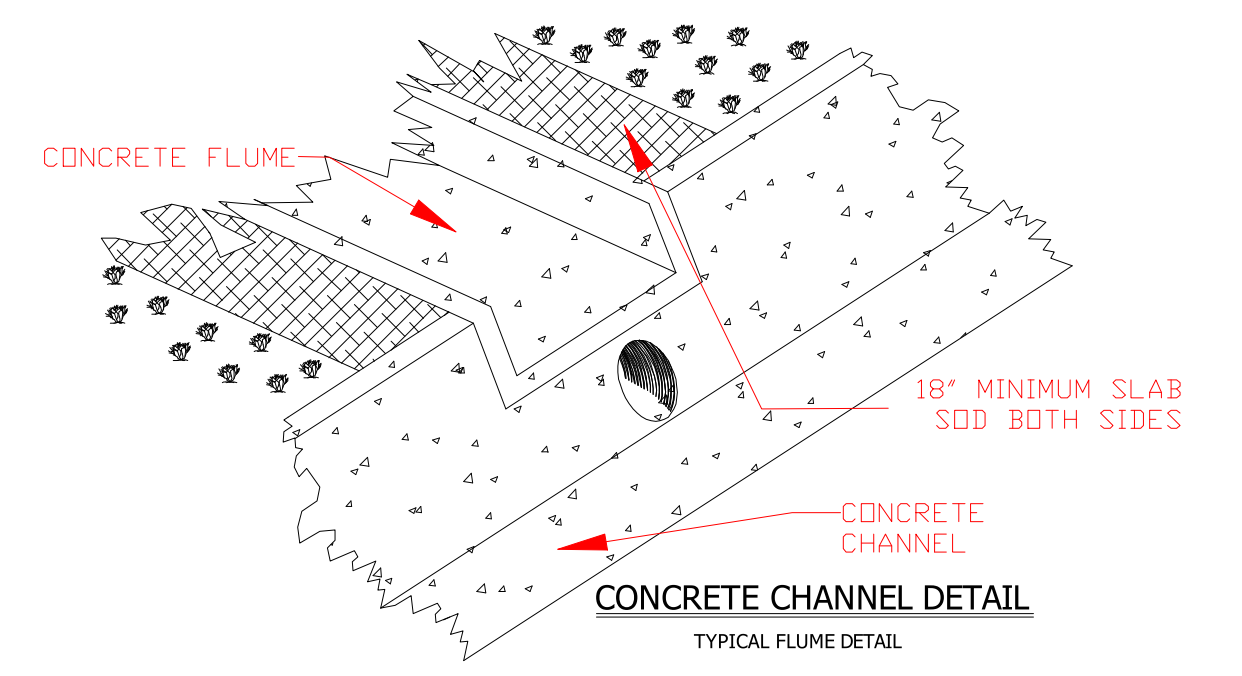
TYPICAL CONCRETE CHANNEL LINER DETAIL



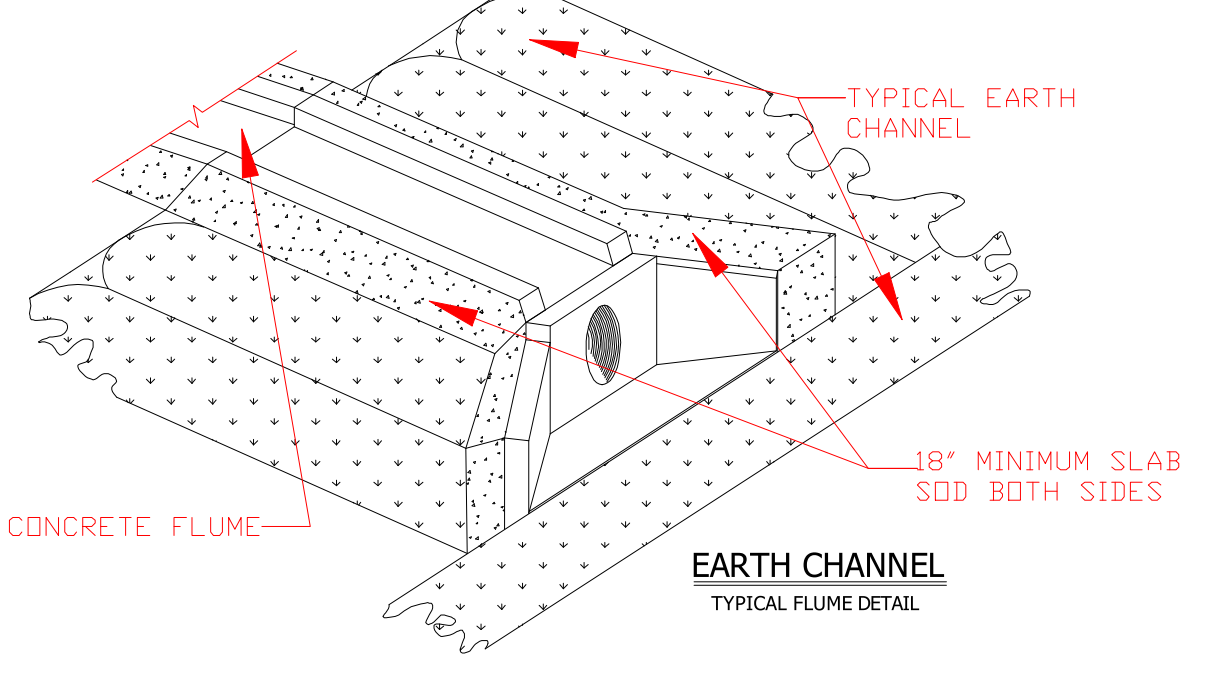
LONGITUDINAL CONSTRUCTION JOINT
THROUGH TRANSITION SECTION



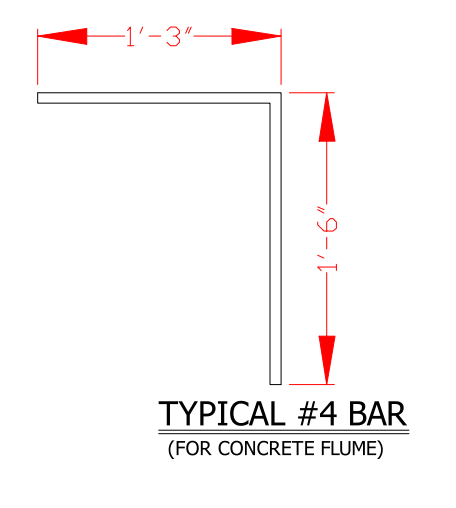
CONCRETE CHANNEL WEEP HOLE DETAIL



CONCRETE CHANNEL DETAIL
TYPICAL FLUME DETAIL



EARTH CHANNEL
TYPICAL FLUME DETAIL



TYPICAL #4 BAR
(FOR CONCRETE FLUME)



PREPARED BY:
The City of Midwest City
Development Services Department
100 N. Midwest Blvd.
Midwest City, Oklahoma 73112

NOTES:

CITY STANDARD DETAILS

STANDARD CHANNEL LINER & FLUME DETAILS

Q:\Devserv\Engineering\City Standard Details\Channel Liners.dwg

CITY ENGINEER: J. Derek Jackson	SCALE: N.T.S.	DRAWN BY: TEB	DATE: 12 Oct. 2005
---	-------------------------	-------------------------	------------------------------