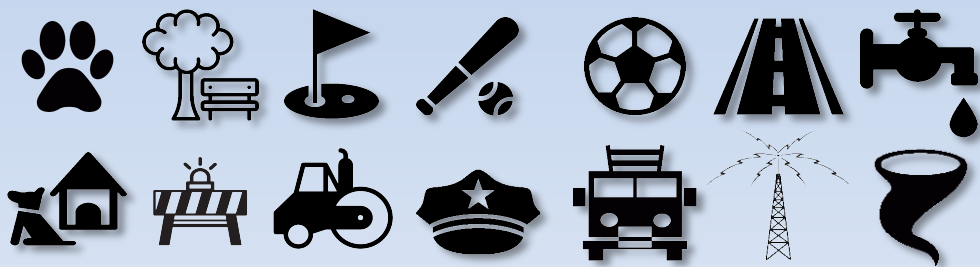


MIDWEST CITY

Where the Spirit Flies High

Bond Issue 2018





Let's Keep MWC Moving Forward!

2018 Bond Issue

This presentation is to share the concepts leadership and management have identified as needed capital improvements across the city.



Bond Issue 2018 Overview

Needs



Each item identified in this presentation will briefly describe the need Midwest City has for the capital purchase.

Community Benefits



A brief description of the intended benefit for the improvement will accompany each item in this presentation.



Bond Issue 2018 Overview

4 Propositions

Four propositions include Parks & Recreation, Public Safety, City-Wide Street Rehabilitation and Water System Improvements. **Each of the 4 propositions will be individually voted upon.**

19 Projects

Within the **4** propositions, **19** individual projects are being presented. Should voters approve a proposition, each **project** within the proposition will also be approved.





MIDWEST CITY

Where the Spirit Flies High

Proposition #1 – Streets

- Residential Street Rehabilitation
- \$15,965,000

- 249 Residential Streets are in need of repair based upon city-wide survey
- Proposition is to Repair or Repave existing streets
- All 6 Wards Included

Street Repairs

\$15,965,000

249 Streets

249 streets have been identified and specifically targeted for this project.

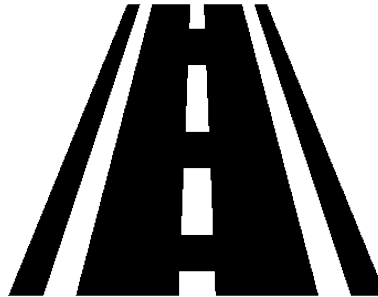
Quality of Life

Smooth streets is a desired benefit for residents within our community.



All 6 Wards

Nearly every square mile will receive some type of improvement in this project. All six Wards are included and the "Original Mile" will see significant improvement.





MIDWEST CITY

Where the Spirit Flies High

Proposition #2 – Water Booster Station

- Phase One
- \$5,560,000

- Updating 60-70 Year Old Water Booster Station & (1) Above Ground Storage Tank



19. Water Booster Station

1600 Felix Place - Renovation - Phase 1

Water Booster Station

\$5,560,000

Aging

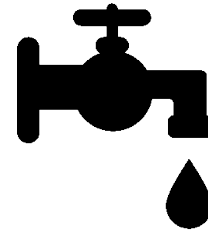
The current booster station on Felix was built in the 1940's and early 1950's.

Above Ground

The current storage is underground, this project would build 1 above ground tank.

Unstable Soil

Shifting soils have caused numerous cracks and leaks...

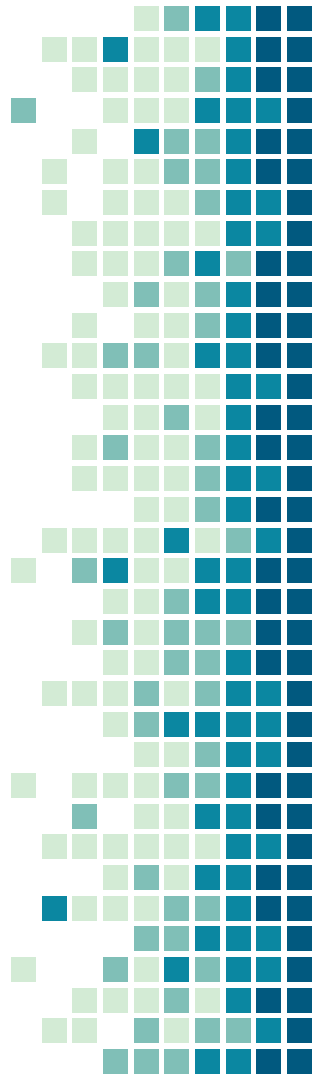


Infrastructure

Water delivery not only helps citizens, but it also ensure reliable water pressure for fire hydrants.

Quality of Life

These upgrades will ensure consistent delivery of water for many years to come. This facility serves as the backup to our surface water supply.





MIDWEST CITY

Where the Spirit Flies High

Proposition #3 – Parks & Recreation

- 6 Projects
- \$21,635,000

- John Conrad Golf Course Renovation
- Reed Baseball Complex Renovation
- Additional Soccer Fields
- New Multi-Purpose Athletic Facility
- Mid-America Park Improvements
- Town Center Park Improvements

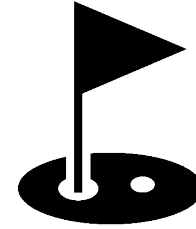


1. John Conrad Golf Course

711 S. Douglas - Renovation & Equipment

JOHN CONRAD GOLF COURSE

\$4,288,000



Irrigation

Good irrigation is the life blood of a course and the aging system is in dire need of replacement. The current system is a combination of 1970 and 1994 components.

Tee Box to Greens

The tee surfaces are uneven and lacking in density and color. Fairways are weak and dull and provide less than desirable playing conditions.

Practice Range

Sub-standard conditions exist for both the driving range and practice putting green.

Bunkers

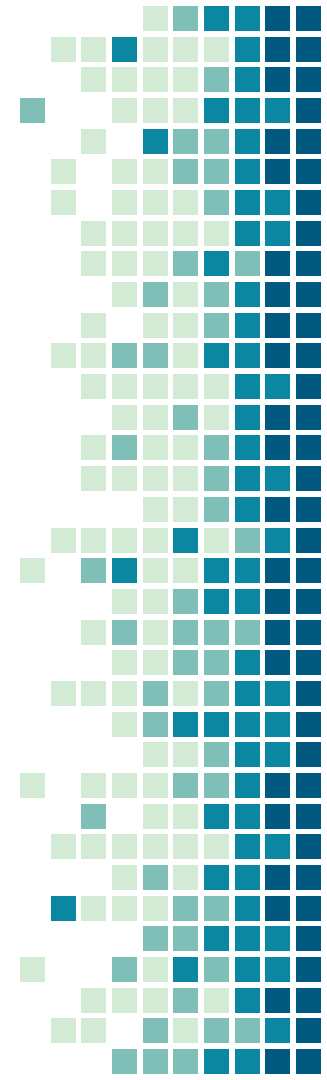
Existing bunkers are severely contaminated and no longer offer desired conditions.

New Equipment

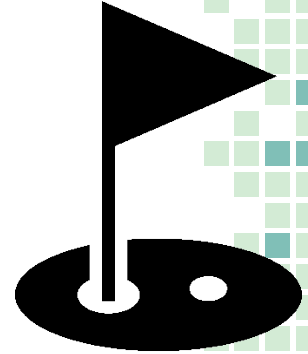
To properly maintain the changes new greens mowers, spray equipment, fairway mowers, and utility vehicles are being proposed.

Premier Eastern Ok County Course

These upgrades will make this course the premier public course for Eastern Ok County.



JOHN CONRAD GOLF COURSE



Maintenance
Equipment
Examples

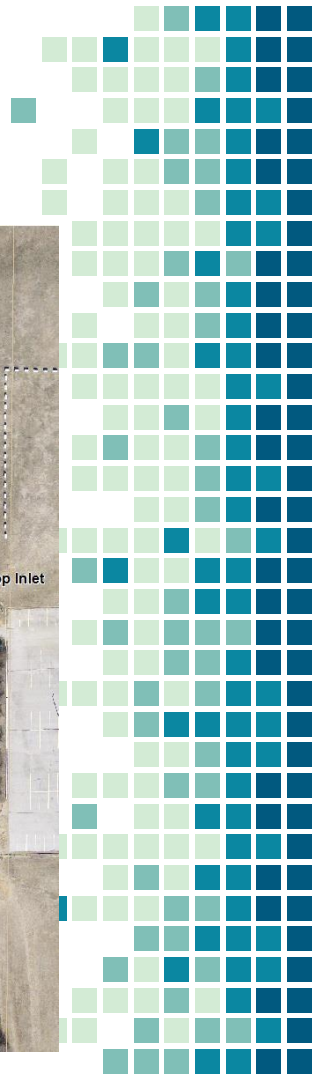




2. Reed Baseball Facility

2500 S. Post Rd – Conversion and Updates

Reed Baseball Complex



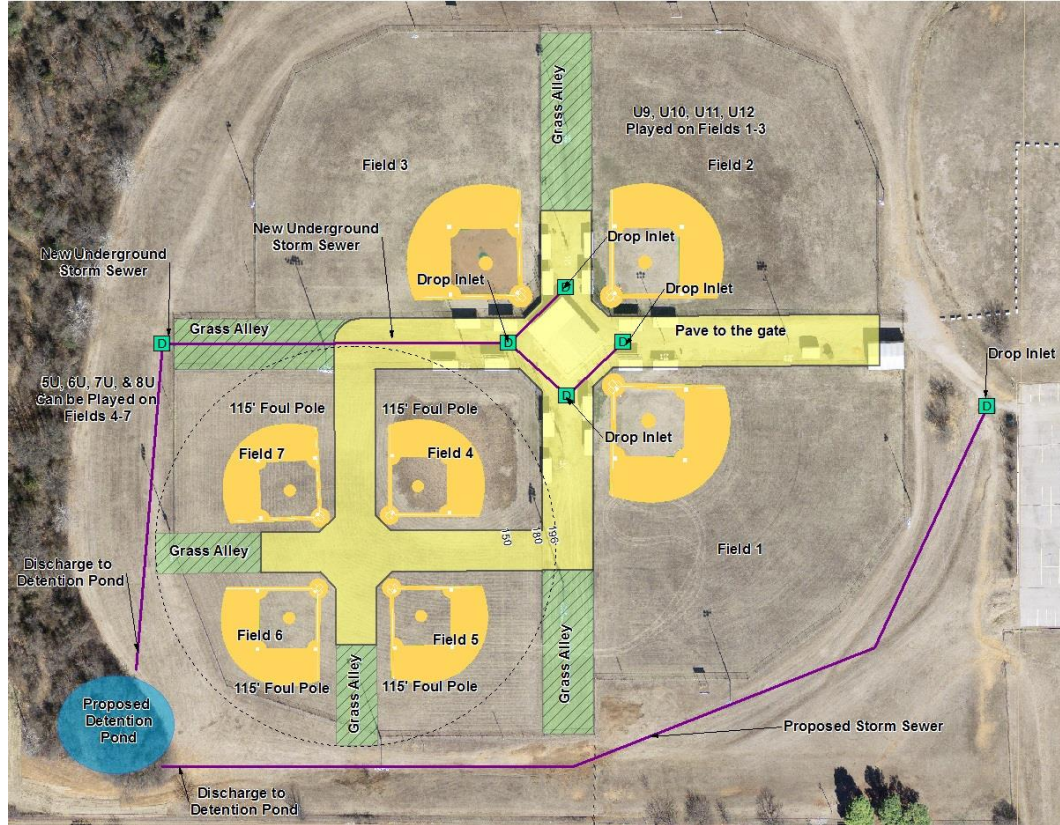
\$1,648,000

Conversion

To allow for younger age players to utilize the facility we are proposing to convert 1 of the large fields into 4 small fields.

Synthetic Infields

To reduce maintenance costs and provide for more play, especially during rainy weather, infields will be made synthetic.





3. Soccer Facility

1800 National Blvd - Renovation & Lighting

Soccer Facility



\$824,000

2 New Soccer Fields

This project would incorporate two new soccer fields outfitted with full irrigation and full field lighting.

Multi-Field Reconfiguration

The existing "Multi-Field" will be updated with bright lighting and reliable & effective irrigation.

Joe B Barnes Regional Park Soccer Complex Improvements



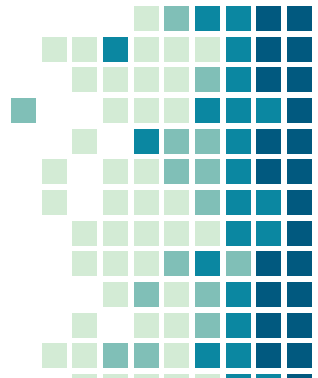


4. Multi-Purpose Athletic Facility

9300 SE 29th – Host a Variety of Youth and Adult Sports

Multi-Purpose Athletic Facility

New Construction - \$5,356,000



State of The Art

Multi-purpose come from a specified design of sports facility built and marked to host a wide variety of youth and adult sports.

The lighting and synthetic surfaces allow for more events, at a lower maintenance cost, with fewer weather delays.

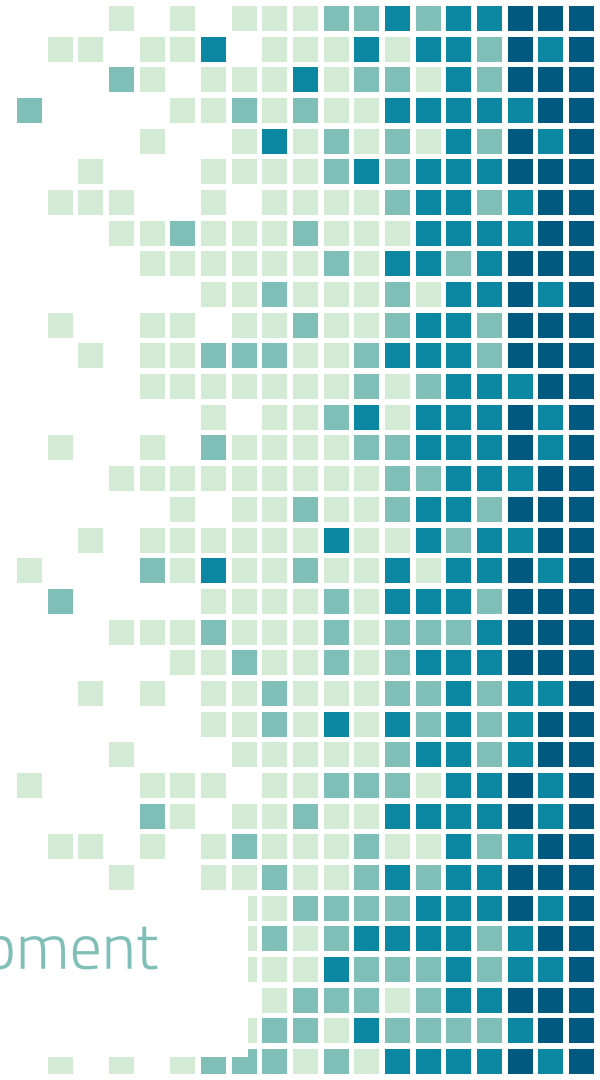
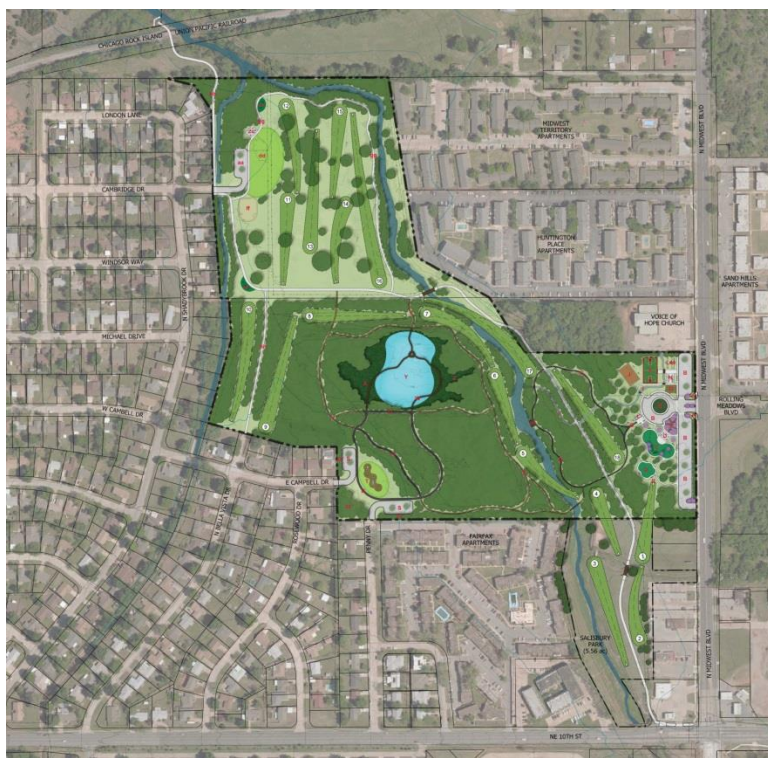
Multiple Sports; Same Field

Baseball Softball
Lacross Football
Macro & Micro Soccer

Economic Engine

This facility would supplement other youth sports facilities in the area, and allow for Midwest City to host larger regional tournaments.





5. Mid-America Park

1400 N. Midwest Blvd. - Renovation & Equipment

Mid-America Park

Renovation - \$1,648,000

Nature Park

Pond surrounded by a natural playground, interpretive signage, and a wood boardwalk.

All-Inclusive Playground

Play trail, Labyrinth, and swing sets. As well as an NCAA basketball court, sensory garden, and disc golf practice area.

Amenities

- Sand Volleyball Court
- Horseshoe Pit
- Paved Nature Trail
- Community Garden

Family & Fitness

- Fitness Stations
- Multiple Trails
- 18 Hole Championship Disc Golf Course



Quality of Life

These upgrades will compliment MWC's commitment to create a destination to draw citizens from multiple neighborhoods and create a safe user-friendly park.



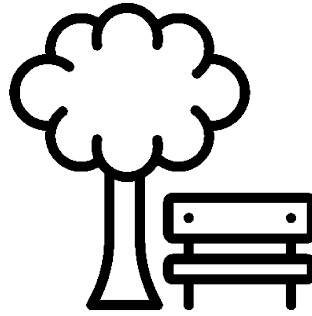


6. Town Center Park

200 W. Mid-America – Revitalization of the Original Mile

Town Center Park

Renovation - \$3,542,000



Old Bomber Tower

Utilizing the land where the former Bomber Tower was located, create a destination for families and events.

Quality of Life

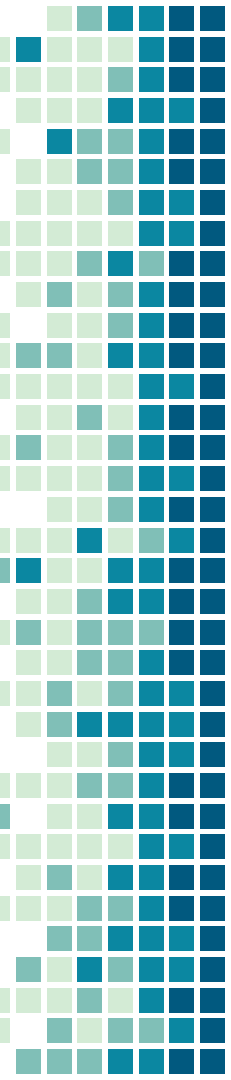
These upgrades developed by Ochner Hare & Hare will compliment MWC's commitment to revitalizing the original mile.

Performance Pavilion

Small venues could be hosted to attract concerts, festivals, and special events.

Greenery

Planting of shade trees, benches, as well as covered areas and whimsical string lights will make this a destination many will want to make.





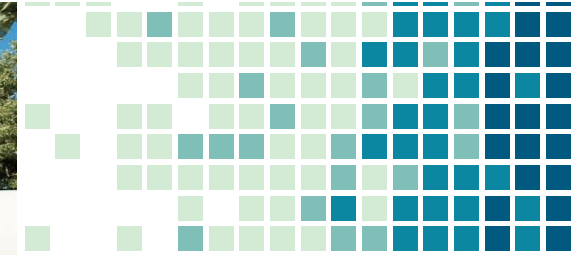
MIDWEST CITY

Where the Spirit Flies High

Proposition #4 – Public Safety

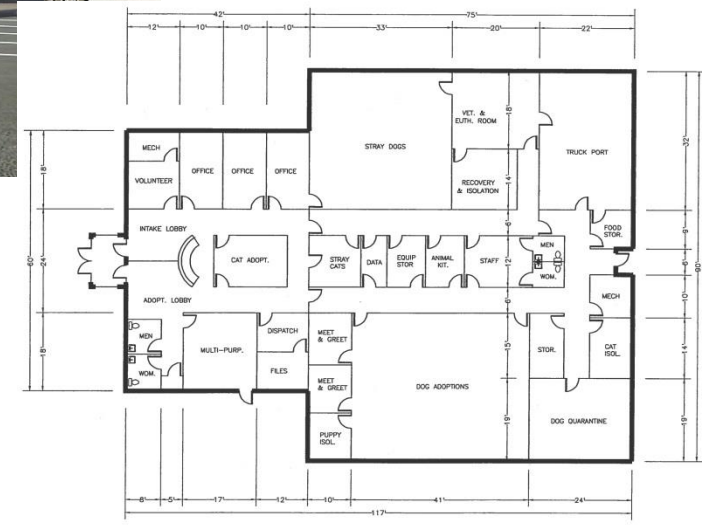
- 11 Projects
- \$10,490,000

- New Animal Services Center
- Police/Fire Training Facility
- (2) Fire Trucks
- Fire Live Burn Building
- Replace Fire Self Contained Breathing Apparatus Equipment
- Fire Hose, Nozzles, Mobile Air, & Command Vehicle
- Fire Station 1 Remodel
- (5) Fire Station Exhaust Removal Systems
- Police & Fire Radio Replacement / Additional Tower Site
- Replacement of Tornado Sirens
- 9-1-1 Call Center Improvements



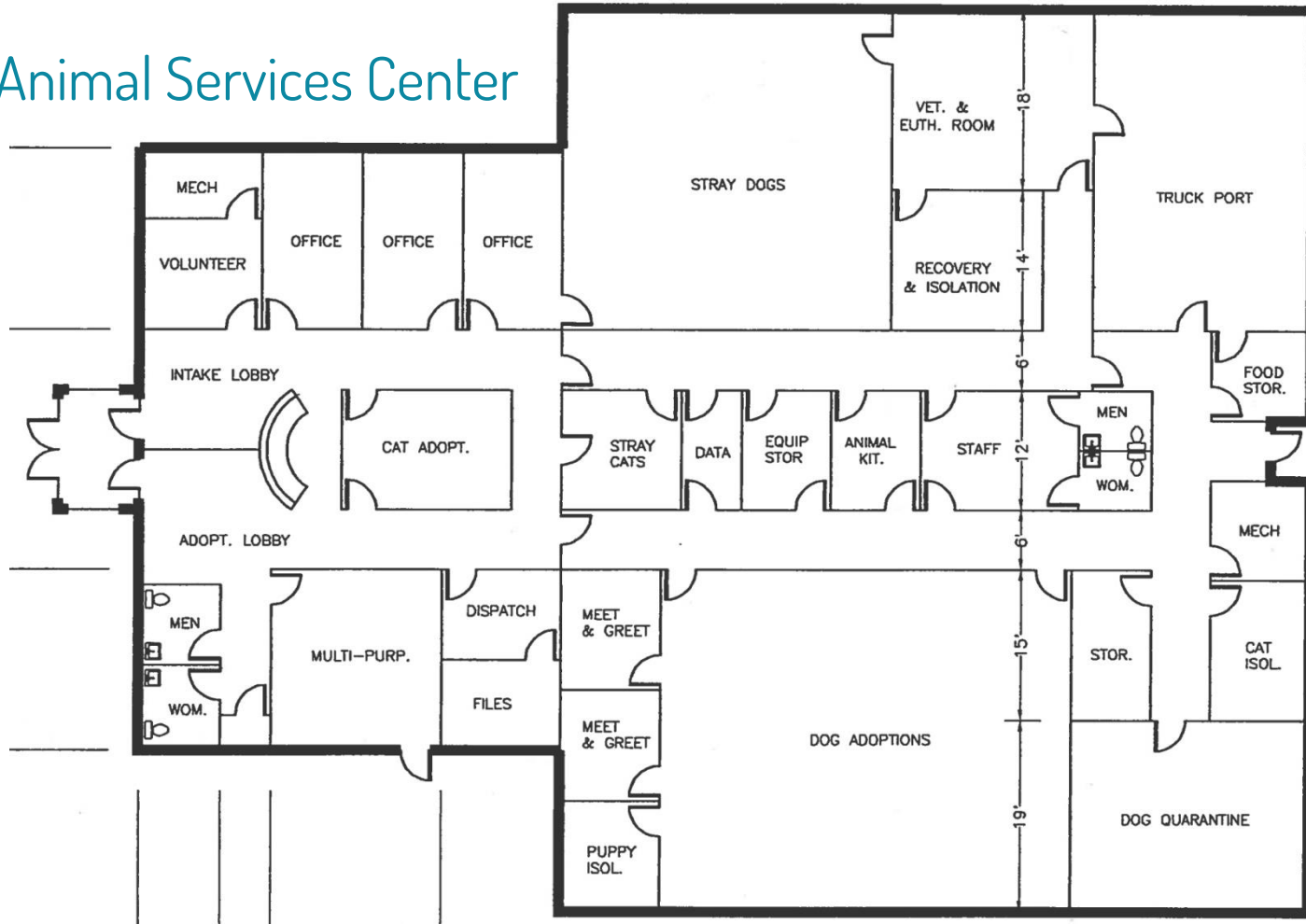
7. Animal Services Center

2901 Woodside - New Construction



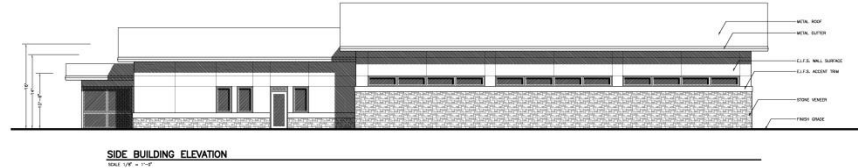
FACILITY FLOOR PLAN
SCALE 1" = 30.00'
BUILDING AREA: 9,360 SF
DATE: 1/17/2018
PRELIMINARY

Animal Services Center



Animal Shelter

\$2,513,200



State of the Art

Will provide better care of animals. Heated flooring, spacious kennels, & HVAC all to help evaporate moisture and cut down on disease.

Inviting

An inviting lobby, building, and areas for staff to work in should help adoption rates increase.

Upkeep

A new facility will have less maintenance and upkeep costs. Including daily cleaning and sanitation.

Visiting Areas

Indoor/Outdoor visiting areas for potential owners to get to know the animal.

Nearly 200% Increase

Double the capacity to provide better care for animals.

Quality of Life

These upgrades will provide a better quality of life for the animals until they can be adopted.

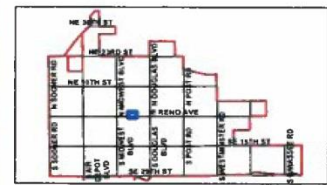




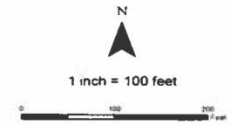
City of Midwest City 2018

MIDWEST CITY
Where the Spirit Flies High
**Proposed Midwest City
Animal Shelter**

- Legend**
- New Building
 - Potential Expansion
 - 14-18 Foot Run
 - Pavement
 - Sept
 - Fire Hydrant
 - Valves, Sewer, Mains
 - Junction Box
 - Sewer Lines
 - Water Lines
 - Gas Lines

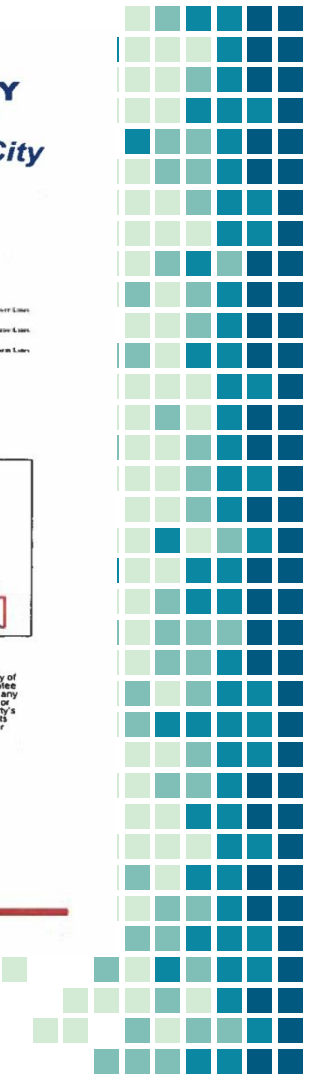


Disclaimer
This map is a general information public resource. The City of Midwest City makes no warranty, representation or guarantee as to the content, accuracy, timeliness or completeness of any of the information provided on this map. Any party's use or reliance on this map, or any information on it, is at that party's own risk and without liability to the City of Midwest City, its officials or its employees for any discrepancies, errors or variances that may exist.



Map Date: Monday, June 04, 2018

2901 Woodside Drive





8. Police & Fire Joint Training Bldg.

9500 SE 15th - New Construction

Police & Fire Joint Training Bldg.



\$299,495

3500 Sq. FT.

Two large rooms to accommodate multiple training sessions or meetings simultaneously.

Inviting

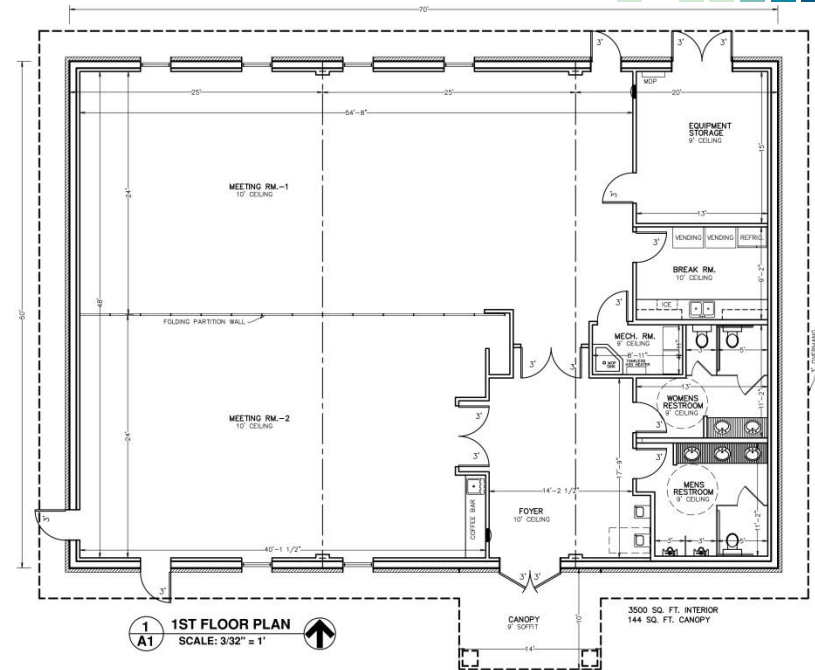
An inviting lobby and facilities for both guests and staff to work all day or host week long outside training.

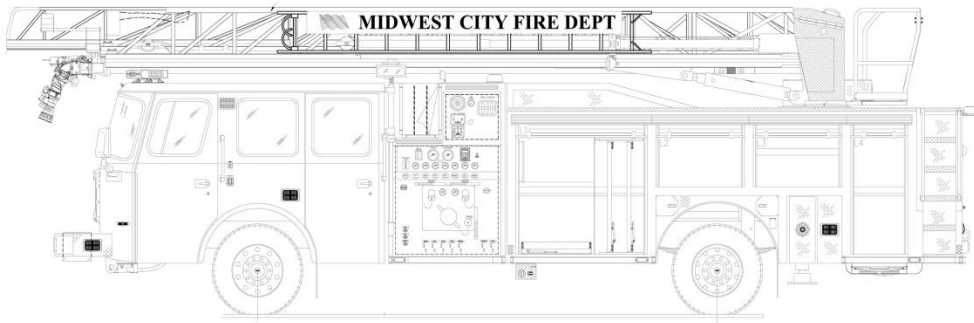
State of The Art

Technology delivery methods will be state of the art in delivering training through smart boards, projectors, and remote video conferencing.

Accommodations

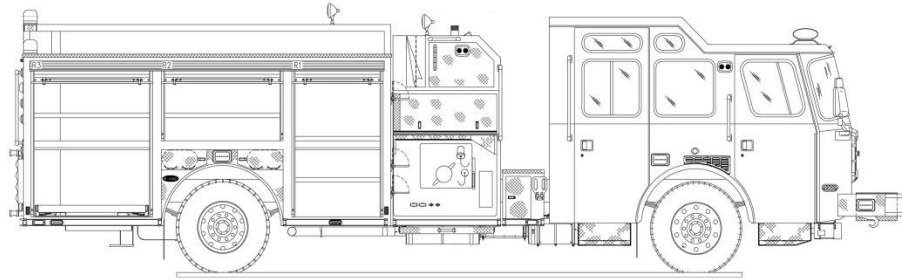
ADA compliant, restrooms, break room, and large storage room.





MIDWEST CITY

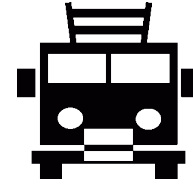
Where the Spirit Flies High



9. Fire Trucks

Replacement of Aging Equipment

Fire Trucks (Ladder & Engine)



\$1,401,200

Aging Fleet

This funding is for a ladder truck and fire engine. The ESCI master study recommendation is to replace fire trucks every 15 years. This would put us on target for that goal.

Technology

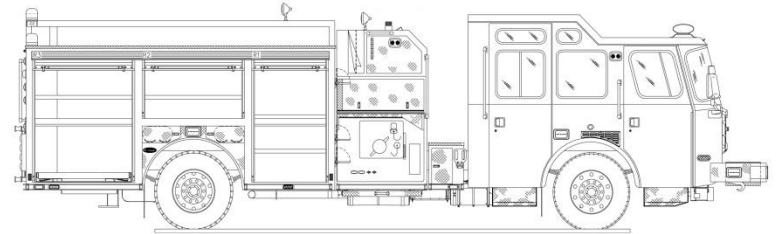
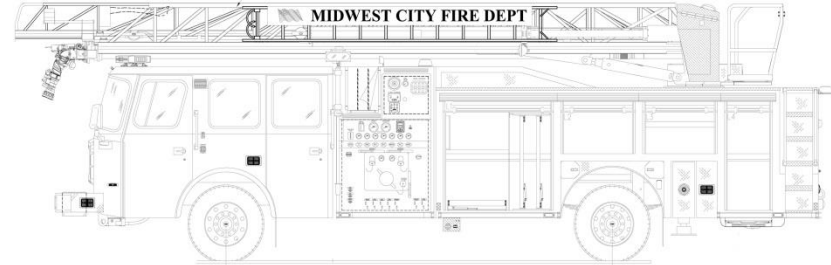
New equipment means meeting the latest standards for safety, efficiency, and reliability for both the public and firefighters.

Maintenance

New apparatus has a warranty as well as better fuel efficiency, thus lowering overall ownership costs.

Reliability

This purchase will launch an engine replacement program where by the fire department can and will systematically replace apparatus on a schedule to keep reliable equipment in service.



Capital Improvements

These items will help launch a full scale capital improvement plan for years to come.



10. Burn Building for Fire & Police Tactical Training

9500 SE 15th - New Construction

Burn Building & Tactical Training



\$586,345

Live Burn Training

Training firefighters in a controlled and live fire environment is invaluable and makes firefighters better trained and safer.

Multi-Story

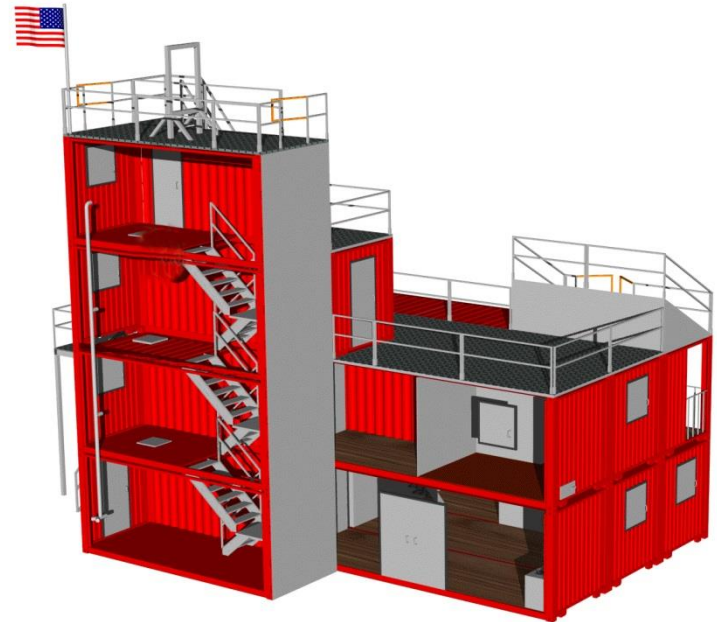
4 story tower can better prepare firefighters and police officers for multi-story buildings.

Police & Fire

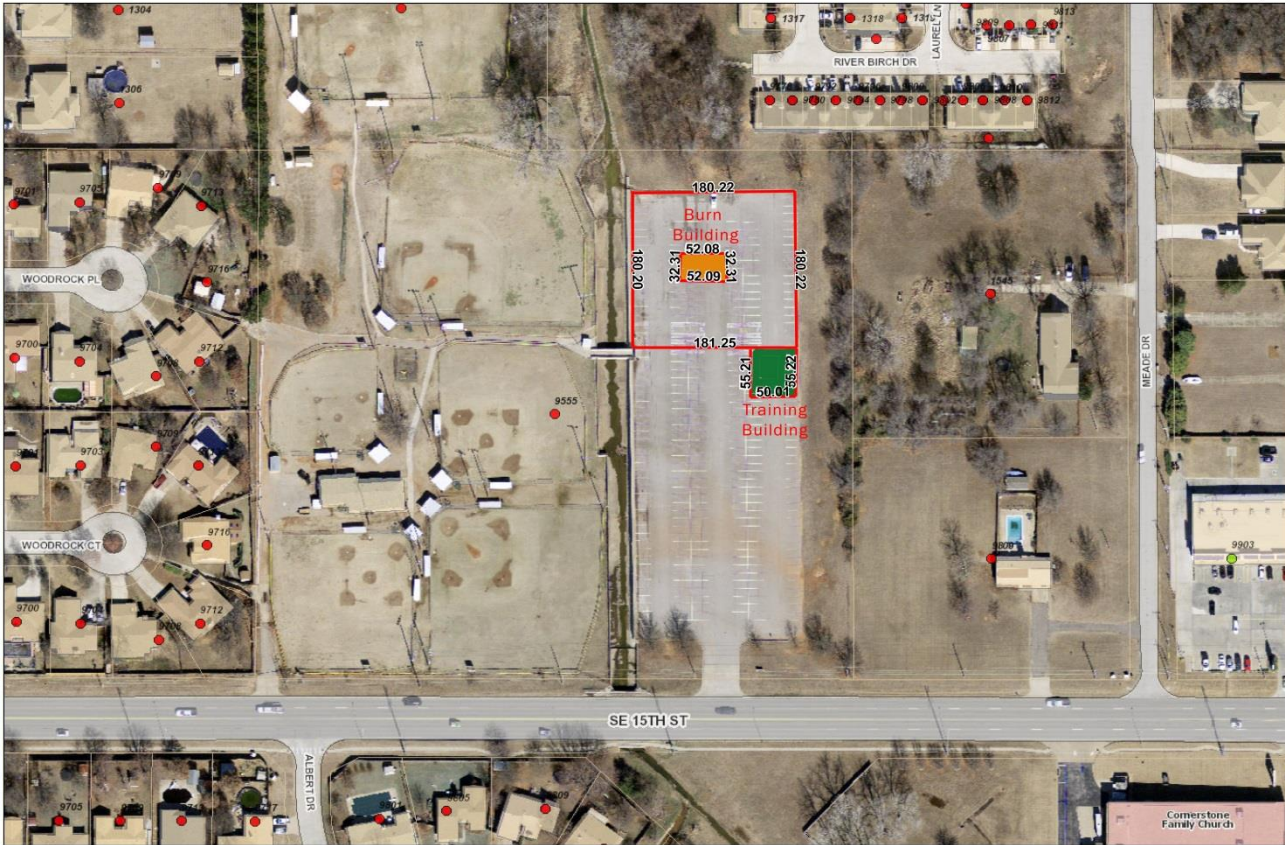
This building can be used for both police and fire. Police can use the building for SWAT, hostage, and active shooter scenarios.

ISO Points

Having our own burn building will enable us to conduct the required live burn training twice a year in our own community.



FredMeyersBurnBuilding



1 in = 100 ft
when printed actual size
on 11x17" paper

DISCLAIMER
This map is a general information public resource. The City of Midwest City makes no warranty, representation or guarantee as to the content, accuracy, timeliness or completeness of any of the information provided on this map. Any party's use or reliance on this map, or any information on it, is at that party's own risk and without liability to the City of Midwest City, its officials or its employees for any discrepancies, errors or variances that may exist.

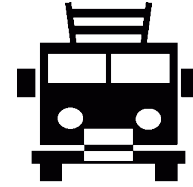
9800 SE 15th



11. Self Contained Breathing Apparatus (SCBA)

Replacement of Aging Equipment

Self Contained Breathing Apparatus (SCBA)



\$370,800

Out of Compliance

Current SCBA's are two standards out of compliance with NFPA standards for health and safety and parts are becoming obsolete.

Technology

New equipment means meeting the latest standards for safety, efficiency, and reliability including the ability to track firefighters in a fire.

Warranty

New SCBA's provide up to a 15 year warranty thus lowering ownership costs.

Federal Funding

We have tried to obtain federal funding multiple times and have been very close, but ultimately not successful.

Financial Need

We have been saving \$25k a year for the last few FY's to purchase new SCBA's, but the need has outpaced the ability to save quick enough for the purchase.





12. Fire Hose, Nozzles, Mobile Air, & Command Vehicle

Replacement of Aging Equipment

Fire Hose, Nozzles, Mobile Air, Command Vehicle

\$263,680



Nozzles

We have re-used the same hose nozzles for many years even when we replace apparatus.

Command Vehicle

The current shift commander vehicle is a 2004 and is in dire need of replacement.

Hose

Hose simply wears out and gets holes. We replace sections as needed, but now is a great opportunity to replace and purchase higher flow hose.

Capital Improvements

These items will help launch a full scale capital improvement plan for years to come.

Mobile Breathing Air Unit

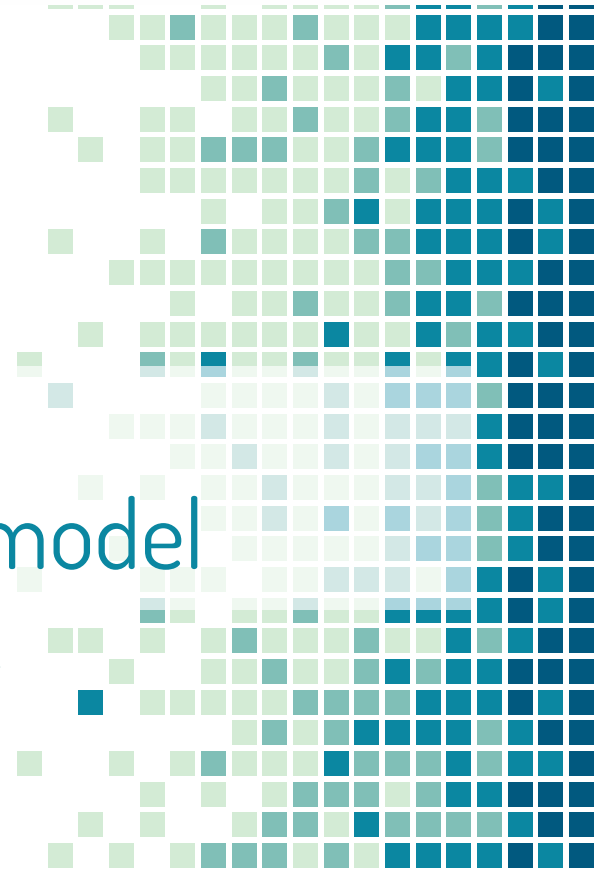
Being able to refill air bottles on a fire scene would be a huge time saver and potentially life saving solution for fire scenes.





MIDWEST CITY

Where the Spirit Flies High



13. Fire Station 1 / Headquarters Remodel

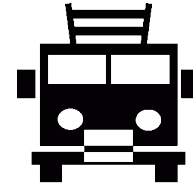
8201 E. Reno - Remodel of 42 year old facility

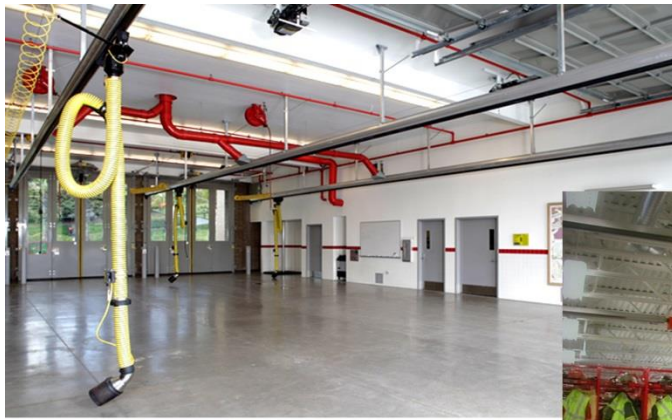
Fire Station 1 / Headquarters Remodel

\$576,800

1976 – Solid Structure

Although station 1 was built in 1976, it is still a solid concrete structure. The systems and interior layout however are in dire need of updating. 42 years of plumbing, electrical, HVAC, and remodels are needing updating for both the fire station side as well as the office side with includes administration and fire prevention.





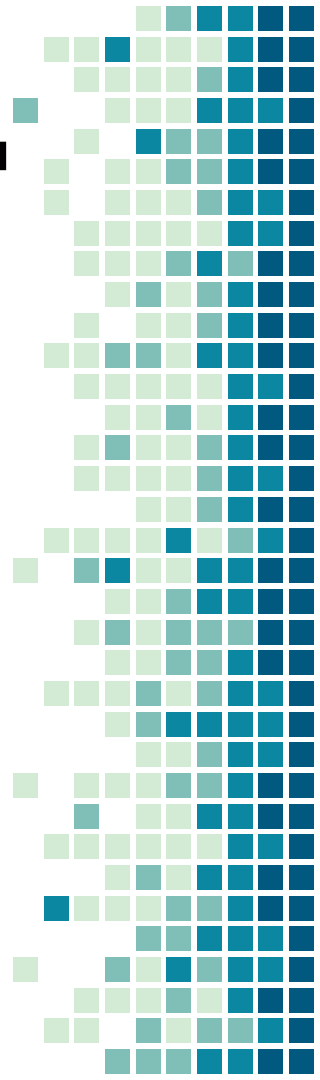
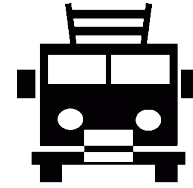
14. Fire Station Exhaust Removal

Health and Safety



Fire Station Exhaust Removal Systems

\$206,000



Cancer Prevention

Studies show that long term exhaust exposure is directly linked to cancer and hazardous contaminants embed in gear thus having long lasting exposure potential.

Low Maintenance

These systems are relatively low maintenance with few moving parts and/or wear items.

Source Capture

This project is for installing systems to catch exhaust (hydrocarbons) at the "source" or tail pipe.

Automatic

Most systems are automatic in that they release off the tail pipe when a firetruck leaves the station thus not hindering or delaying a call.

5 Stations in need

Only 1 fire station has an exhaust removal system in place. If approved, this funding would cover the remaining 5 stations in the same way.

Firefighter Safety

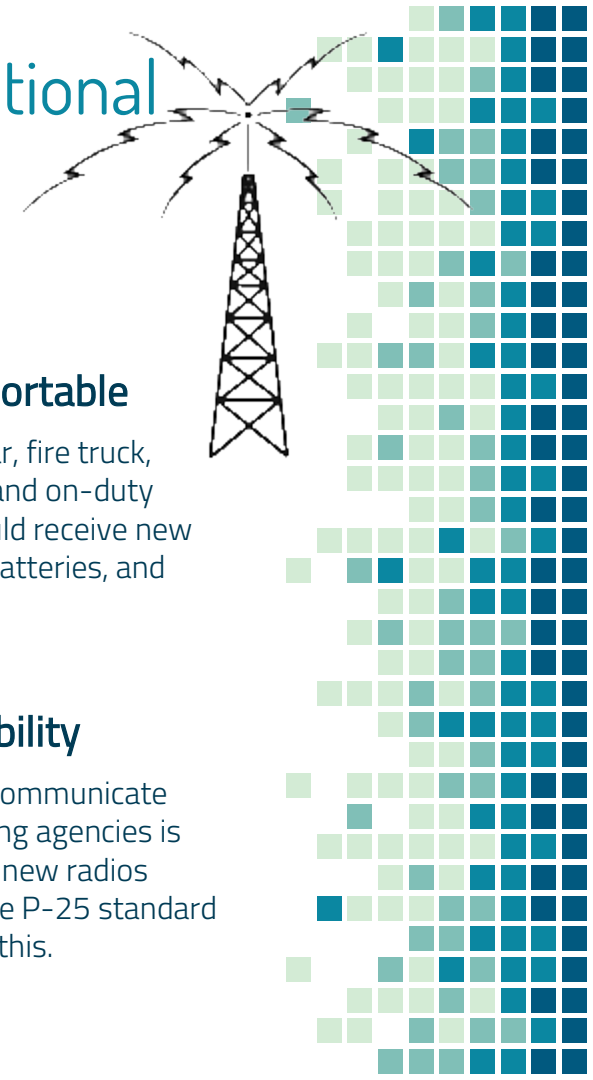
In the fire service, cancer is a real problem and this would be one less exposure risk we have the opportunity to put in place.



15. Police and Fire Radio Replacement

Replacement of Obsolete Equipment

Police & Fire Radio Replacement / Additional Tower Site



\$1,169,200

Obsolete Equipment

Current radios are obsolete and no longer manufactured. Parts are now becoming an issue.

Safer

A new tower site will give better coverage and redundancy in the event of a failure.

Self Reliance

Owning our radios and infrastructure allows us to make updates, changes, and repairs as needed without relying on a state operated system .

Technology

New radios would include bluetooth technology as well emergency buttons alerting 9-1-1 which specific first responder is in distress.

Mobile & Portable

Every police car, fire truck, police officer, and on-duty firefighter would receive new radios, spare batteries, and accessories.

Interoperability

Being able to communicate with neighboring agencies is important and new radios would meet the P-25 standard to accomplish this.

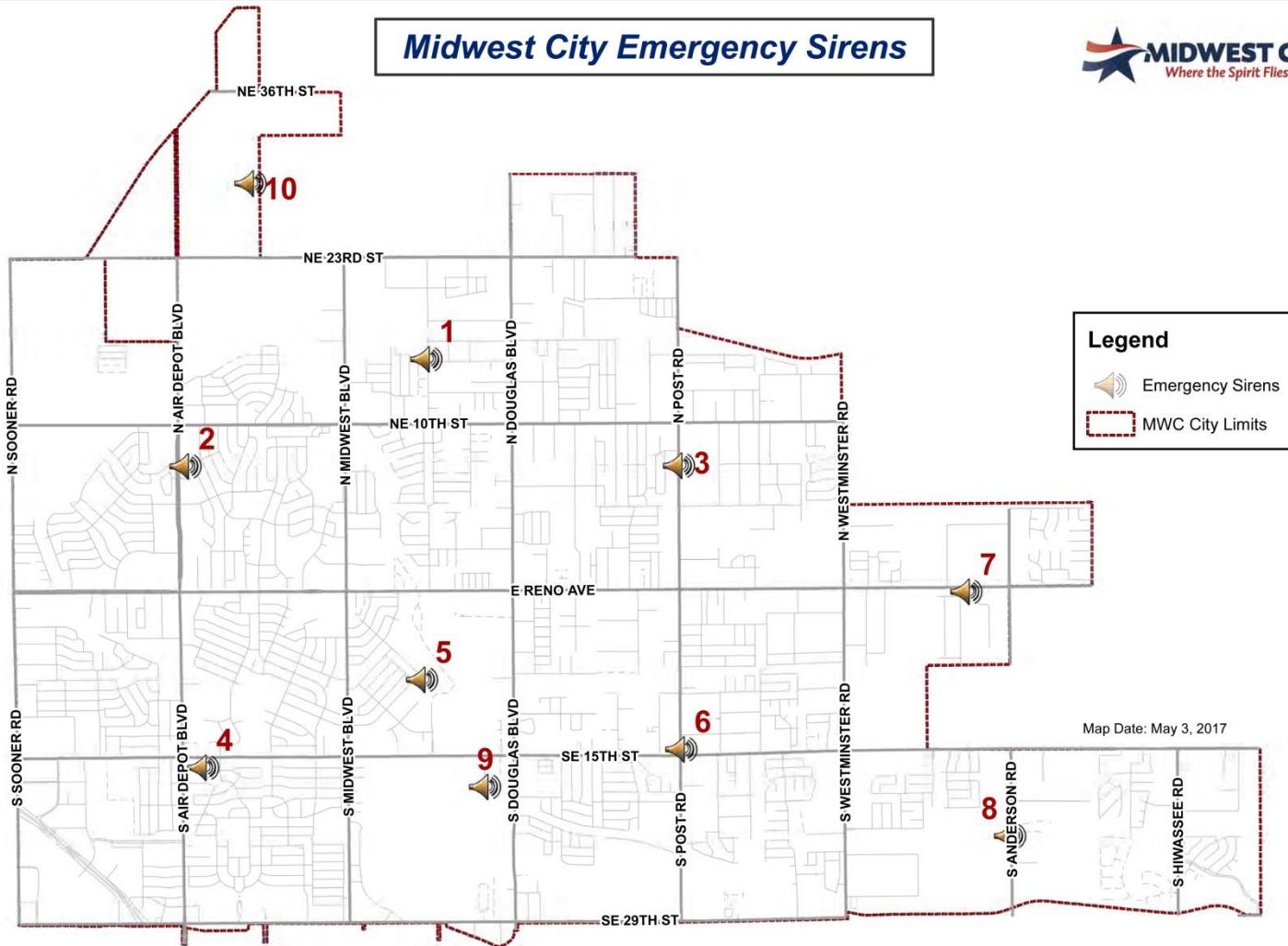


16. Tornado Sirens (Outdoor Warning Devices)

Replacement of Aging Infrastructure



Midwest City Emergency Sirens



Tornado Sirens (Outdoor Warning Devices)

\$288,400

Omnidirectional

Upgrades would include a 360 degree siren to alert the public better. Current sirens only project sound in the direction the siren is pointing.

Stronger Equipment

Sirens would be placed on concrete towers instead of utility poles. 8 of the 10 current sirens are 18 years old.

Additional Sirens

Currently the city has 10 sirens. This would increase warning devices to 12. These would also be able to do both siren and voice alerts.

Augmented Funding

Federal funding will assist with this capital purchase by providing nearly \$100,000 on top of the requested \$360,500.





MIDWEST CITY

Where the Spirit Flies High



17. Public Safety Technology Improvements 9-1-1

100 N. Midwest Blvd - Upgrading of Equipment

Public Safety Technology Improvements 9-1-1

\$716,880

9-1-1 Software

Upgrades to 9-1-1 software would enable more efficient dispatching abilities as well as improved response time for first responders.

Mobile Ticket Writing

Mobile ticket writing would bring Police into the 21st century for electronic citations.

Mobile Devices

Aging devices that receive critical life saving dispatch information from 9-1-1 need updating for both Police and Fire.

Behind the Scenes

Hardware and datacenter infrastructure would be updated to allow for high availability, growing storage demands, & fail over capabilities.





Proposed Capital Projects - 2018 General Obligation Bond

PROJECT	Amount	% of Project
City-wide Street Rehabilitation - Proposed Proposition 1		
Street Repairs	\$12,772,000	100.00%
City-wide Street Rehabilitation Subtotal / Including Cost of Issuance		29.76%
Water System Improvements - Proposed Proposition 2		
Water Booster Station Renovation - Phase 1	\$4,448,000	100.00%
Water Booster Station Renovation Subtotal / Including Cost of Issuance		10.36%
PARKS & RECREATION - Proposed Proposition 3		
John Conrad Golf Course Renovation & Equipment	\$4,288,000	19.82%
Baseball Facility Renovation - Reed Only	\$1,648,000	7.62%
Soccer Facility	\$824,000	3.81%
Multi-purpose Athletic Facility	\$5,356,000	24.76%
Mid-America Park	\$1,648,000	7.62%
Town Center Park	\$3,542,000	16.37%
Parks & Recreation Subtotal / Including Cost of Issuance		40.33%
Public Safety - Proposed Proposition 4		
Animal Shelter	\$2,513,200	23.96%
Police/Fire Training Facility & Burn/Tactical Building	\$885,840	8.44%
Fire Trucks (2)	\$1,401,200	13.36%
Fire Department Self Contained Breathing Apparatus	\$370,800	3.53%
Fire Hose & Nozzles, Shift Command Vehicle, Mobile Breathing Air Unit	\$263,680	2.51%
Fire Station 1 & Headquarters Remodel	\$576,800	5.50%
Fire Station Exhaust removal systems (5 stations)	\$206,000	1.96%
Police & Fire Radio Replacement / Additional Tower Site	\$1,169,200	11.15%
Outdoor Warning System (Tornado Sirens)	\$288,400	2.75%
Public Safety Technology Improvements	\$716,880	6.83%
Public Safety Subtotal / Including Cost of Issuance		19.55%

Proposed 2018 GO Bond Grandtotal **\$53,650,000**

A “G.O.” Bond is a General Obligation Bond

50%+ Voter
Approval
Required

Projects are
Grouped into
different
Propositions

Funding is
paid back
through
property
taxes



Bond Overview



1) Bonds Are Sold

Depending on the propositions approved by the voters, the bonds are sold incrementally over a period of time (not all at once). The funds are then used to make capital improvements for infrastructure and quality of life such as street repairs, parks, fire trucks, and public safety to name a few.

2) Funding Received

Bond funds are dispersed to the city in relation to the propositions approved and in the order of necessity as seen by city planners.



3) Repaid over 25 years

Repayment of the bond occurs over a 25 year period. This repayment is done through a millage on property taxes within Midwest City.



Bond Issue 2018 Overview



Fiscal Year	Mid-Del Schools	City of Midwest City	Oklahoma County	Rose State College	Total Millage
7/1/2017	68.54	0.92	23.28	19.15	111.89
7/1/2016	70.64	0.96	23.81	19.65	115.06
7/1/2015	71.03	5.18	23.72	19.88	119.81
7/1/2014	70.32	5.44	23.58	20.33	119.67
7/1/2013	64.96	5.78	23.87	17.02	111.63
7/1/2012	66.55	6.09	23.97	17.10	113.71
7/1/2011	64.64	6.62	24.06	17.18	112.50
7/1/2010	65.60	6.81	24.27	17.32	114.00
7/1/2009	65.83	7.24	24.79	17.34	115.20
7/1/2008	65.05	7.29	23.18	17.30	112.82
Average	67.32	5.23	23.85	18.23	114.63

Trend of Tax Rates on Major Taxing Units*

Midwest City, Oklahoma

*Average per \$1,000 of Net Assessed Valuation

Bond Issue 2018 Overview

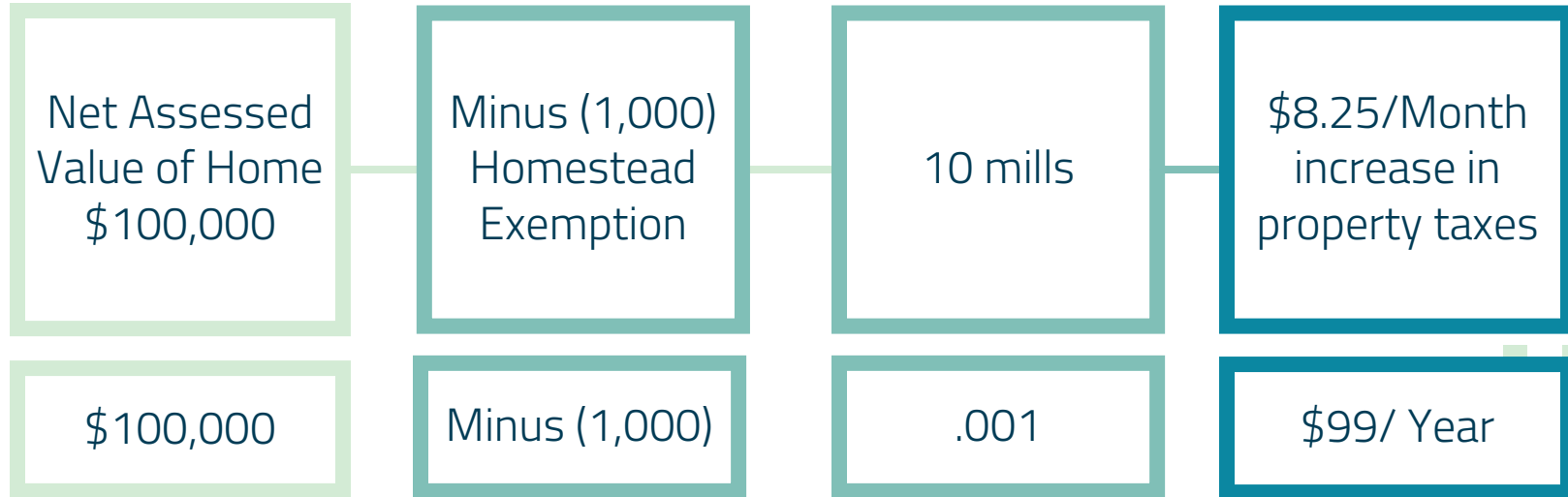


First Year Cost of Proposed GO Bonds		
Market Value	Net Assessed Value	Property Tax Monthly Cost
\$50,000	\$4,500	\$3.56
\$100,000	\$10,000	\$7.92
\$150,000	\$15,500	\$12.27
\$200,000	\$21,000	\$16.63
\$250,000	\$26,500	\$20.98

This chart is based on current market conditions with no growth in valuation projected and an 11% assessment ratio.

The chart shows the first year millage for the proposed issues of 9.5 mills. Then bonds anticipated to be issued over the next two years to keep the levy at max for the Midwest City sinking fund of 10.00 mills total.

Property Tax Impact Example

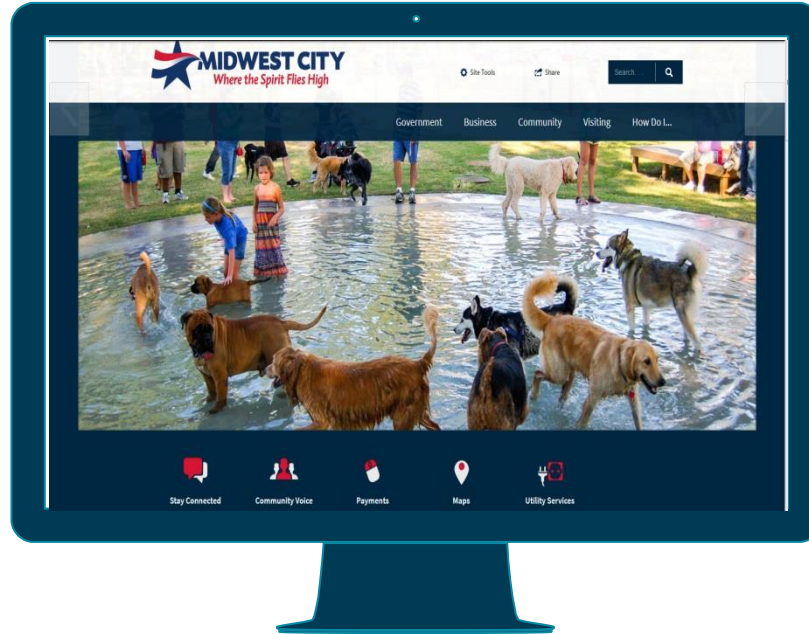


www.MidwestCityOK.org



Visit our Website

Detailed Bond information can be found on the city website for your review.





MIDWEST CITY

Where the Spirit Flies High

What are your thoughts?

We are open to your thoughts and ideas about what is important to you to help keep Midwest City “moving” in the right direction for the future!

